

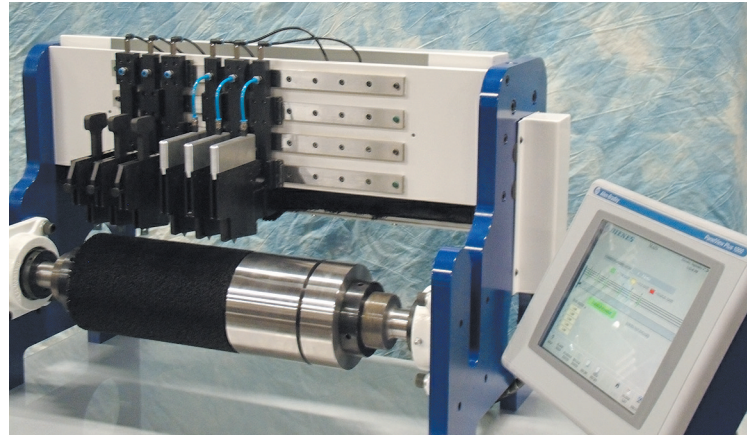
## QUICK SET

Automatic Slitter Positioning Systems

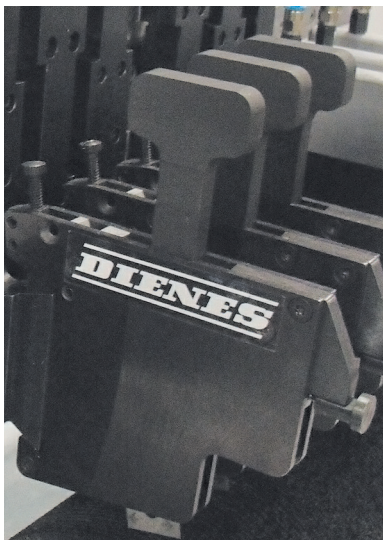
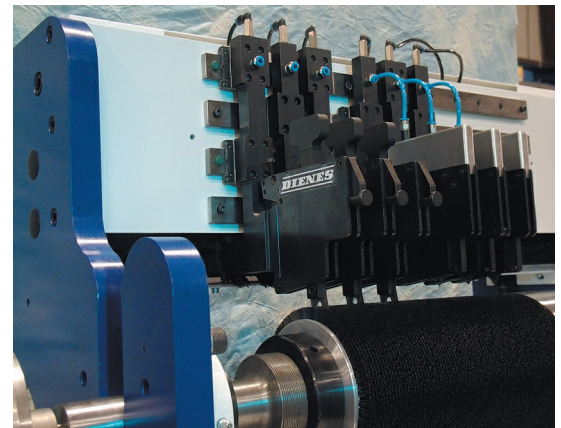
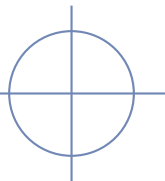
**DIENES CORPORATION** of Spencer, MA, USA, has been supplying QUICK SET Positioning Systems for over a decade. QUICK SET Systems are employed worldwide in a wide variety of web slitting applications. DIENES is proud to add a RAZOR QUICK SET Positioning System to compliment the Shear Slitting and Crush Cutting Quick Set product line. All three slitting systems can be manufactured for O.E.M. custom fit stand alone or winder mounted designs.

### RAZOR SLITTING SYSTEMS

**QUICK SET** system knives are rigidly mounted to precision, heavy duty linear rails for smooth movement. Knife holders effortlessly react to QUICK SET program commands. QUICK SET system HMI touch screen control can move knives automatically in unison or separately in a semi-automatic mode. They can also function in a closed loop process; automatically adjusting knife set locations as needed from cameras, edge guiding, thickness gauges or other web processing equipment signals. DIENES control logic will not allow holder movement if any positioning interference develops.

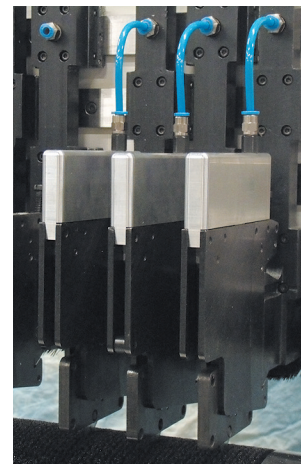


**QUICK SET** is available with the cost effective PQAS 1/2 Mechanical Razor Knife holder design and the industry standard PQAS 1/2 Pneumatic Razor knife holder to accommodate your application needs. DIENES employs a stiff brush roller rather than a grooved steel roller to support the web during blade engagement. The blade never contacts a damaging steel surface when setting slit widths.



**The PQAS 1/2 Mechanical Holder** allows blade replacement without holder removal. Individual blade holder slides can be preloaded with fresh blades for common, quick, and safe exchange when needed. A quick pin locking system allows placing the blade out of harm's way during thread up.

**The PQAS 1/2 Pneumatic Holder** provides remote engage/disengage operations for those applications without easy access.

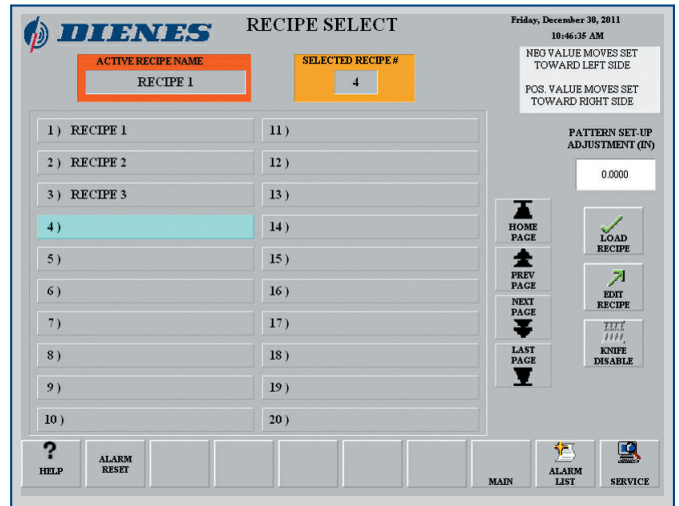
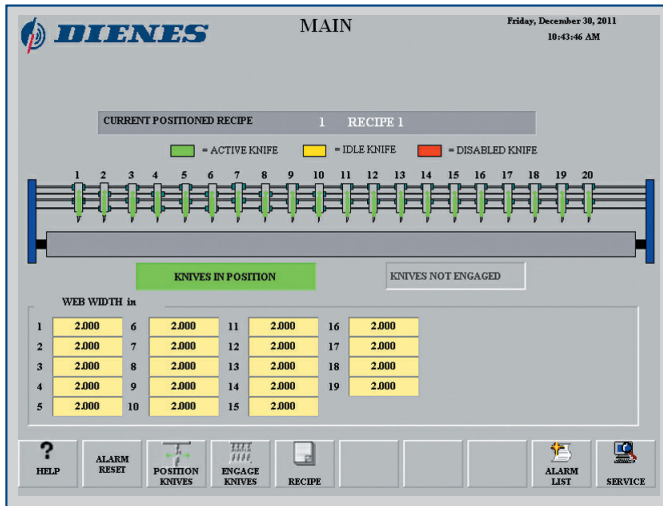


# QUICK SET

Automatic Slitter Positioning Systems

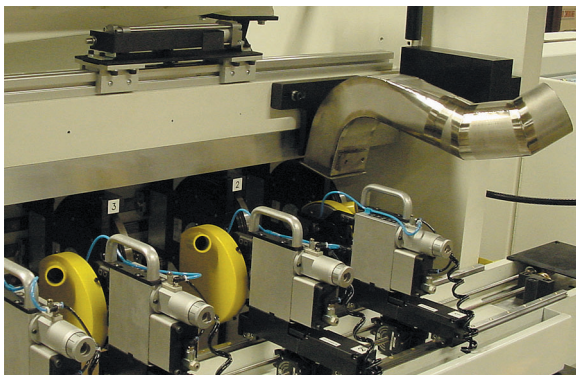
## OPERATION OF ALL QUICK SET Automatic Positioning Systems

is straightforward. The HMI Graphics "Main Menu" touch screen guides operators to various function and diagnostic screens. Included are commands to "Position Knives", "Engage Knives", select and activate a slitting setup from menu "Recipes" and open to a "Thread-Up Position". Numerical key pads open to set new slit widths and confirmation windows appear for verification before positioning changes take place. In addition, slit width changes can be downloaded from Production Control or loaded at an Operator Control Station.



**MONITORING SCREENS** clearly define which knife sets are moving and which are engaged, their spacing, the current recipe running and what recipe is in queue. All QUICK SET commands and communications are processed via Ethernet/IP or other Industrial Protocols. A huge menu capability completes a customized package for any web slitting application.

DIENES control software will not allow invalid knife spacing requests and will notify set-up personnel of specific faults while preventing system operation. Activated alarms are recorded and DIENES service support group, with 50 years combined experience, is readily available to operators with our 24/7 Service Contract option.



### AVAILABLE OPTIONS

- Remote Handheld Pendant; used when winders OCS is located away from the slitting section. The Pendant duplicates certain Main screen functions to make required adjustments or review diagnostic data.
- Integral Trim Chutes designed to accommodate the winder envelope.
- Knife Life Monitoring; providing notification of imminent knife replacement.
- 24/7 support; with your approval, operators can contact DIENES service personnel for support.



**VIEW DIENES QUICK SET AND FAMILY VIDEOS AT**  
[www.youtube.com/dienesusa](http://www.youtube.com/dienesusa)

