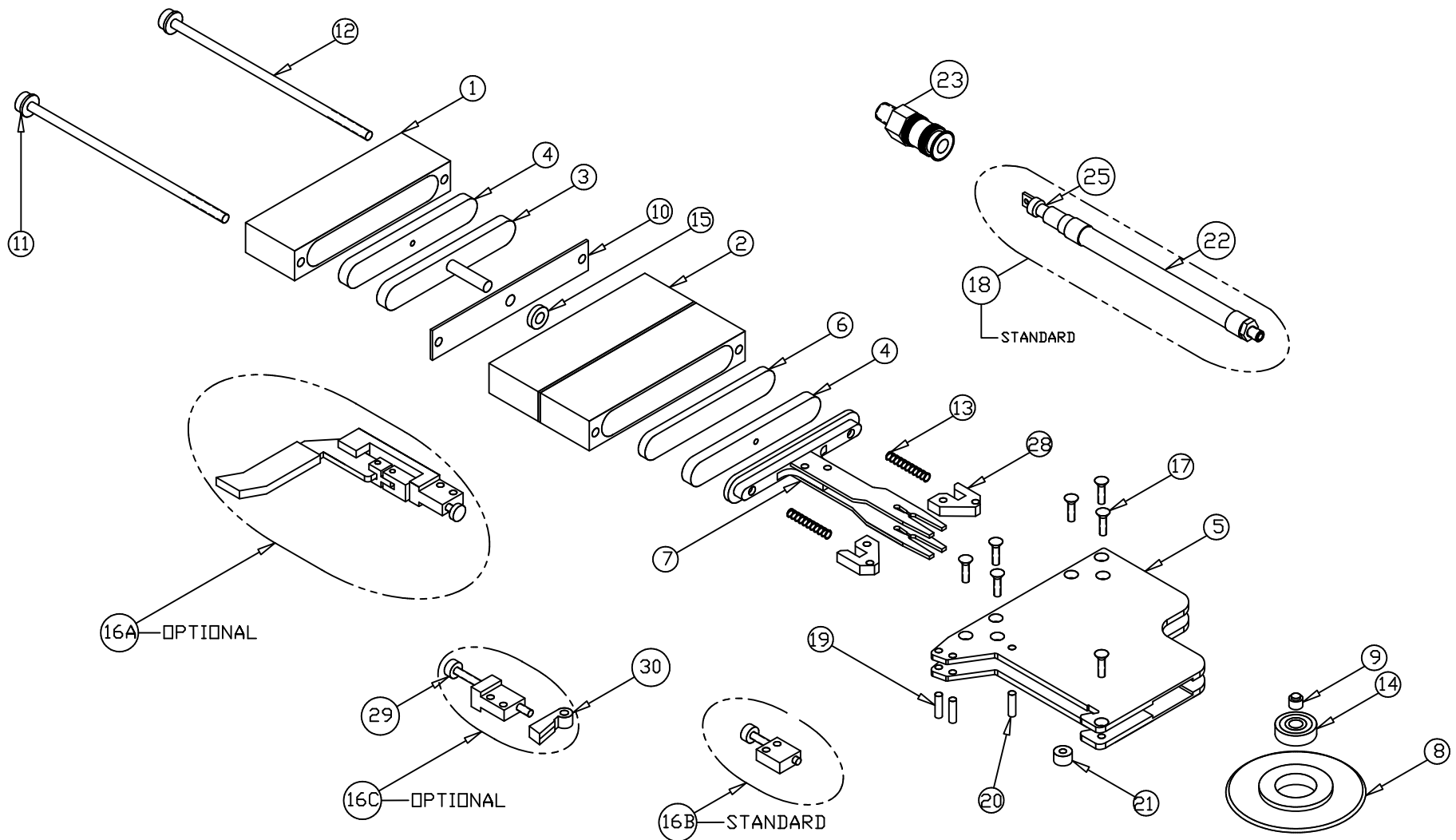


DIENES

PQD-MC-3 CRUSH/SCORE CUT HOLDER PARTS LIST



ITEM #	DESCRIPTION	DIENES PART #	ITEM #	DESCRIPTION	DIENES PART #	ITEM #	DESCRIPTION	DIENES PART #
1	PRESSURE CYLINDER	244B110563010	12	SOCKETHEAD CAP SCREW	0D00912005019	21	DISTANCE RING	244B010077030
2	PRESSURE CYLINDER	244B110564010	13	COILED PRESSURE SPRING	263D010091010	22	QUICK DISCONNECT 1/8 NPT	0FPNZUB010003
3	PISTON	244A215001001	14	BALL BEARING	0D00625006002	23	QUICK DISCONNECT G1/8	0FPNZUB010001
4	GASKET	244B090176010	15	O-RING	244A229B05001	24	MALE CONNECTOR	02147-09
5	HOUSING	244A340001001	16A	QUIK CLAMP™	244A333002001	25	QUICK DISCONNECT	02080-09
6	INTERMEDIATE STRIP	244B000678040	16B	STANDARD CLAMP	244B020076030	26	CLAMP SCREW	22412
7	KNIFE FORK	244A171004001	16C	OBsolete CLAMP	234B010093020	27	CLAMPING ARM	244B020076010
8	CRUSH CUT KNIFE	239B100265010	17	COUNTERSUNK SCREW	244A112001001	28		
9	AXLE PIN	244B010379E03	18	AIR HOSE ASS'Y(TYPE 1)-M6	234E000003060	29		
10	INTERMEDIATE PLATE	244B110571010	19	RIVET	02099-09	30		
11	WASHER	0D00125005001	20	CLAMPING SPLIT PIN				

2130-005

ITEM #	DESCRIPTION	DIENES PART #	ITEM #	DESCRIPTION	DIENES PART #	ITEM #	DESCRIPTION	DIENES PART #
1	PRESSURE CYLINDER	022157	12	SOCKETHEAD CAP SCREW	651714	21	DISTANCE RING	244B010077030
2	PRESSURE CYLINDER		13	COILED PRESSURE SPRING	021245	22	QUICK DISCONNECT 1/8 NPT	02120-09
3	PISTON		14	BALL BEARING	02698	23	QUICK DISCONNECT G1/8	02120-10
4	GASKET	244B090176010	15	O-RING	021571	24	MALE CONNECTOR	02147-09
5	HOUSING	N.A.	16A	QUIK CLAMP™	021100	25	INTERMEDIATE PIECE	
6	INTERMEDIATE STRIP		16B	STANDARD CLAMP	021901	26	CLAMP SCREW	22412
7	KNIFE FORK	021229	16C	OBsolete CLAMP	244B020076030	27	CLAMPING ARM	02037-09
8	CRUSH CUT KNIFE	22470	17	COUNTERSUNK SCREW	021610	28		
9	AXLE PIN	02045-09	18	AIR HOSE ASS'Y(TYPE 1)-M6	22184	29		
10	INTERMEDIATE PLATE	021401	19	RIVET	02776	30		
11	WASHER	650976	20	CLAMPING SPLIT PIN	02099-09			