

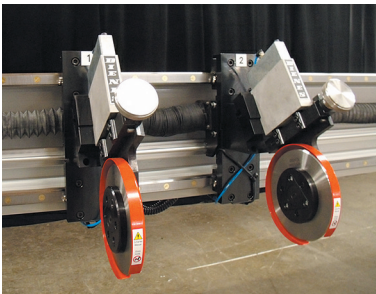
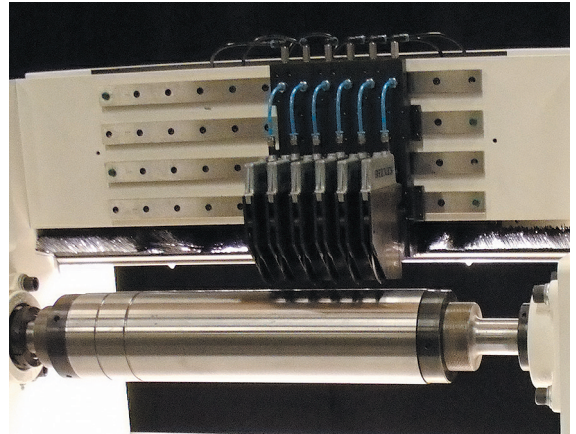
QUICK SET

Automatic Slitter Positioning Systems

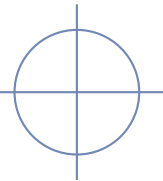
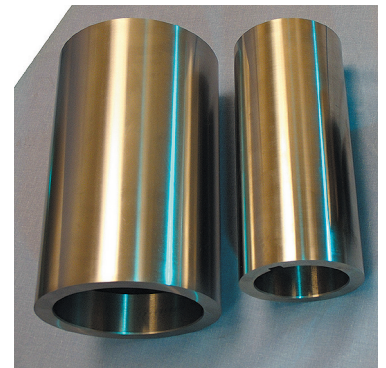
DIENES CORPORATION of Spencer, MA, USA, has been supplying CRUSH CUT QUICK SET Positioning Systems for over a decade. QUICK SET Systems are employed worldwide in high speed fiber glass, sand paper, tissue and other tough web slitting applications. Dienes' Quick Set systems can be manufactured for O.E.M. custom fit stand alone or winder mounted designs.

CRUSH CUTTING SYSTEMS

ALL QUICK SET SYSTEM KNIVES are rigidly mounted to precision, heavy duty linear rails for smooth movement. Knife holders effortlessly react to QUICK SET program commands. QUICK SET system HMI touch screen control can move knives automatically in unison or separately in a semi-automatic mode. They can also function in a closed loop process; automatically adjusting knife set locations as needed from cameras, edge guiding, thickness gauges or other web processing equipment signals. DIENES control logic will not allow holder movement if any positioning interference develops.



QUICK SET is available with any DIENES crush cutting knife holder. Whether you're looking to slit narrow widths, or run up to 4,000 feet per minute, QUICK SET positioning can accommodate your applications needs. Anvil rolls, through hardened sleeves and quick disconnecting knife head assemblies are also available.

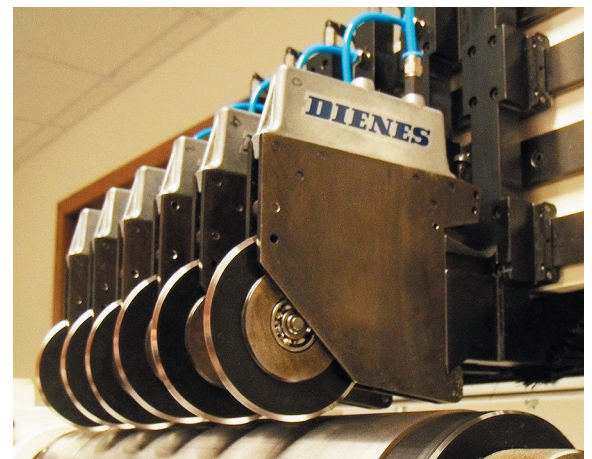


EVER SINCE THE DIENES original PQA Crush Knife holder patent expired, we have been very flattered by our numerous imitators. But imitation is not a match for DIENES high quality, which cannot be duplicated. From this one popular model, DIENES has developed ten more crush holder designs to fit numerous crush and heat cutting applications. There's a DIENES crush holder to fit your needs.



DIENES PQA FRONT LOADING

crush knife holder offers the benefit of machine mounted knife changes in less than 5 seconds...without the loss of positioning accuracy.

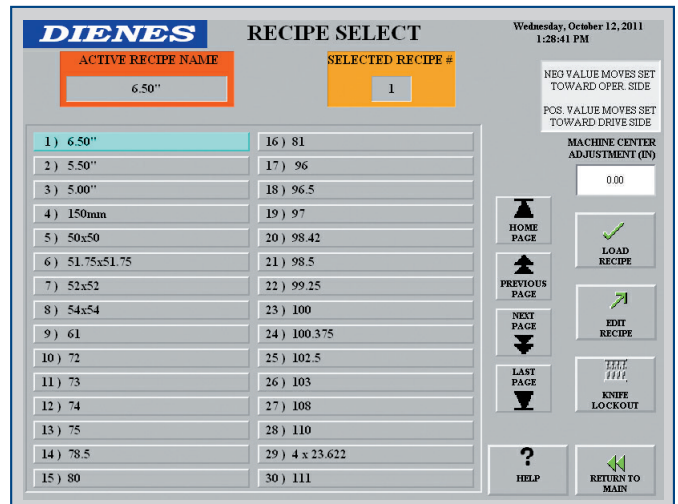
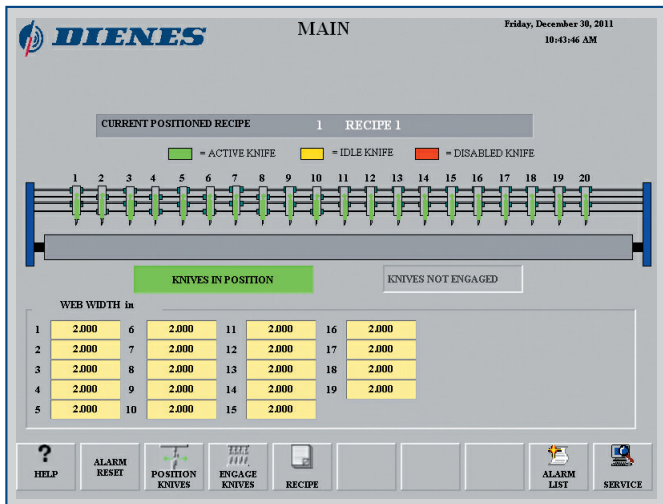


QUICK SET

Automatic Slitter Positioning Systems

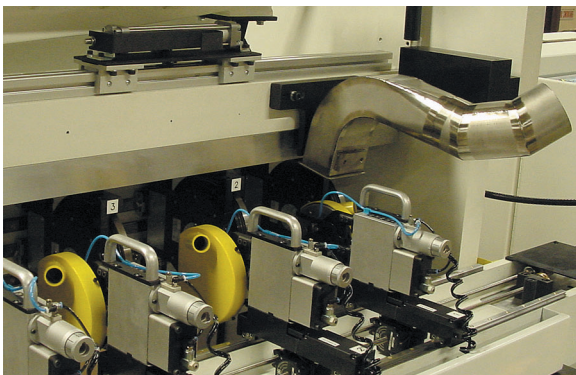
OPERATION OF ALL QUICK SET Automatic Positioning Systems

is straightforward. The HMI Graphics "Main Menu" touch screen guides operators to various function and diagnostic screens. Included are commands to "Position Knives", "Engage Knives", select and activate a slitting setup from menu "Recipes" and open to a "Thread-Up Position". Numerical key pads open to set new slit widths and confirmation windows appear for verification before positioning changes take place. In addition, slit width changes can be downloaded from Production Control or at an Operator Control Station.



MONITORING SCREENS clearly define which knife sets are moving and which are engaged, their spacing, the current recipe running and what recipe is in queue. All QUICK SET commands and communications are processed via Ethernet/IP or other Industrial Protocols. A huge menu capability completes a customized package for any web slitting application.

DIENES CONTROL SOFTWARE will not allow invalid knife spacing requests and will notify setup personnel of specific faults while preventing system operation. Activated alarms are recorded and DIENES service support group, with 50 years combined experience, is readily available to operators with our 24/7 Service Contract option.



**VIEW DIENES QUICK SET
AND FAMILY VIDEOS AT**
www.youtube.com/dienesusa

AVAILABLE OPTIONS

- Remote Handheld Pendant; used when winders OCS is located away from the slitting section. The Pendant duplicates certain Main screen functions to make required adjustments or review diagnostic data.
- Integral Trim Chutes designed to accommodate the winder envelope.
- Knife Life Monitoring; providing notification of imminent knife replacement.
- 24/7 support; with your approval, operators can contact DIENES service personnel for support.

