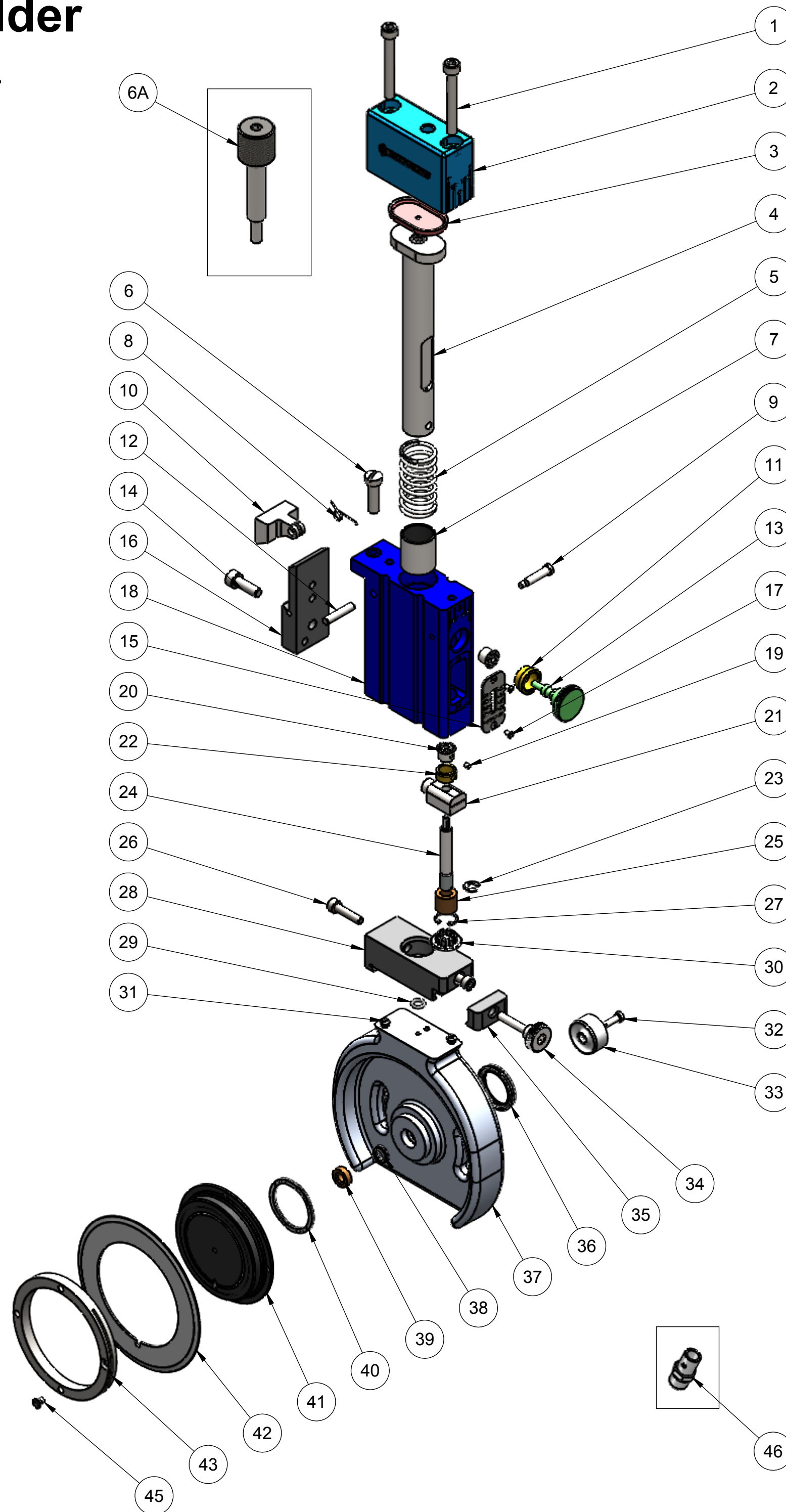
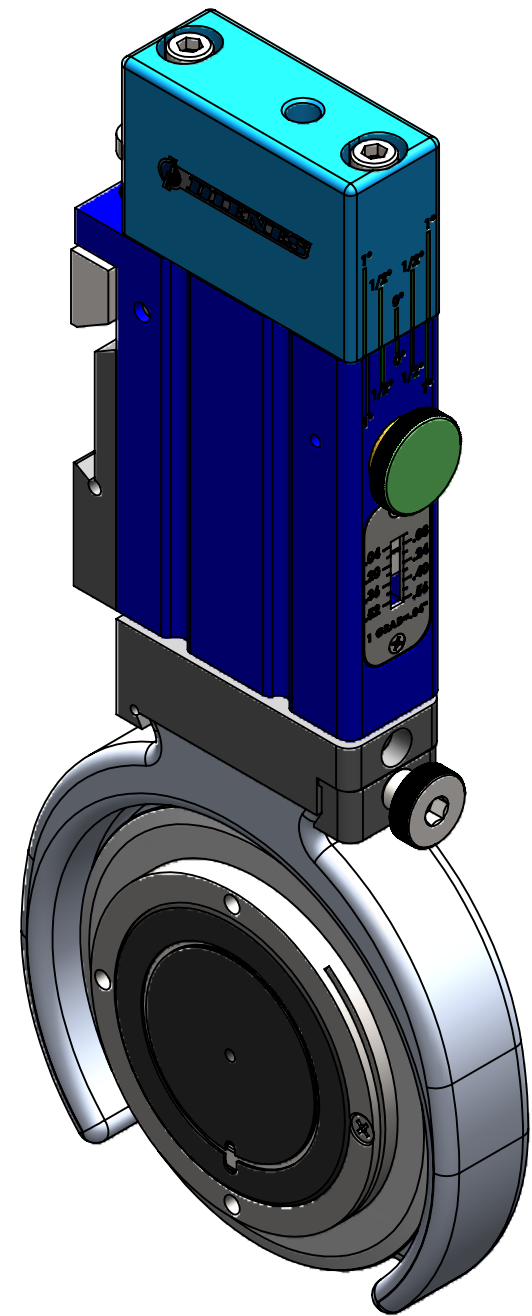


DC25-90 Knife Holder

DIENESUSA NO. P3046



| ITEM NO. | PART NUMBER | DESCRIPTION | QTY. |
|------------------------------|-----------------------------|----------------------------------|------|
| 1 | 613580-0100 | Scr,Cap,Soc Hd,M5x40,S.S. | 2 |
| 2 | 420047 | CYLINDER,COVER,DS25 | 1 |
| 3 | 420067 | SEAL,CYLINDER,BUNA | 1 |
| 4 | 420050 | SHAFT,GUIDE,MAIN,16mm | 1 |
| 5 | 420258 | COMPRESSION SPRING | 1 |
| 6 | 656936-0100 | FILLISTER HEAD SCREW | 1 |
| 7 | 022154 | BUSHING | 2 |
| 8 | 412414-01 | TORSION SPRING | 1 |
| 9 | 657044 | SHOULDER SCREW | 1 |
| 10 | 420536 | CLAMP ARM DC25 | 1 |
| 11 | 420229 | BUSHING,FLANGE,0.500X0.406X0.25 | 1 |
| 12 | 616022 | DOWEL PIN | 1 |
| 13 | 420061 | KNOB,ADJ.,DEPTH,DS25 | 1 |
| 14 | 613566 | SOCKET HEAD CAP SCREW | 1 |
| 15 | 420066 | DEPTH ADJ. PLATE | 1 |
| 16 | 420535 | CLAMP,DOVETAIL,DC25 TO TID CL1 | 1 |
| 17 | 657123 | PHILLIPS FLAT HEAD SCREW | 2 |
| 18 | 420046 | BODY,MAIN,DS25 | 1 |
| 19 | 657028 | CUP PT. SET SCREW | 2 |
| 20 | 656888 | MITER GEAR | 2 |
| 21 | 420065 | DEPTH SLIDER | 1 |
| 22 | 420250 | BUSHING,BRASS,0.420X0.313X0.188" | 1 |
| 23 | 656890 | E-RING | 1 |
| 24 | 420063 | DEPTH ADJUSTMENT SCREW | 1 |
| 25 | 420064 | DEPTH SCREW BUSHING | 1 |
| 26 | 613514 | SOCKET HEAD CAP SCREW | 2 |
| 27 | 656932 | RETAINING RING | 1 |
| 28 | 420450 | DRAW BAR | 1 |
| 29 | 657148 | O-RING | 1 |
| 30 | 656760 | HOLE PLUG | 1 |
| 31 | 419966 | LOCATING PIN | 2 |
| 32 | 657043 | SEALING LO-HEAD CAP SCREW | 1 |
| 33 | 420059 | PISTON,GUIDE,DC25-90 | 1 |
| 34 | 420452 | DOVETAIL CLAMPING SCREW | 1 |
| 35 | 420451 | DOVETAIL CLAMP | 1 |
| 36 | 657040 | U-CUP SEAL | 1 |
| 37 | 420453 | HEAD,HOUSING,DC25-90 | 1 |
| 38 | 655682 | U-CUP SEAL | 1 |
| 39 | 420058 | AXLE GUIDE RETAINER | 1 |
| 40 | 657336 | WAVE SPRING | 1 |
| 41 | 420052 | KNIFE CARRIER ASSY. DC25 | 1 |
| 42 | ***REFERENCE SHEAR KNIFE*** | 22899 (90 x 60 x 1.2mm 52100) | 1 |
| 43 | 420056 | NUT,RETAINER,KNF,DC25 | 1 |
| 45 | 657282 | FLAT PHILLIPS HEAD SCREW | 1 |
| ADDITIONAL COMPONENTS | | | |
| 6A | 420534 | KNURLED CLAMPING KNOB | 1 |
| 45 | 420922 | OIL WICK (EXTRA MACHINING REQD) | 1 |
| 46 | | | |