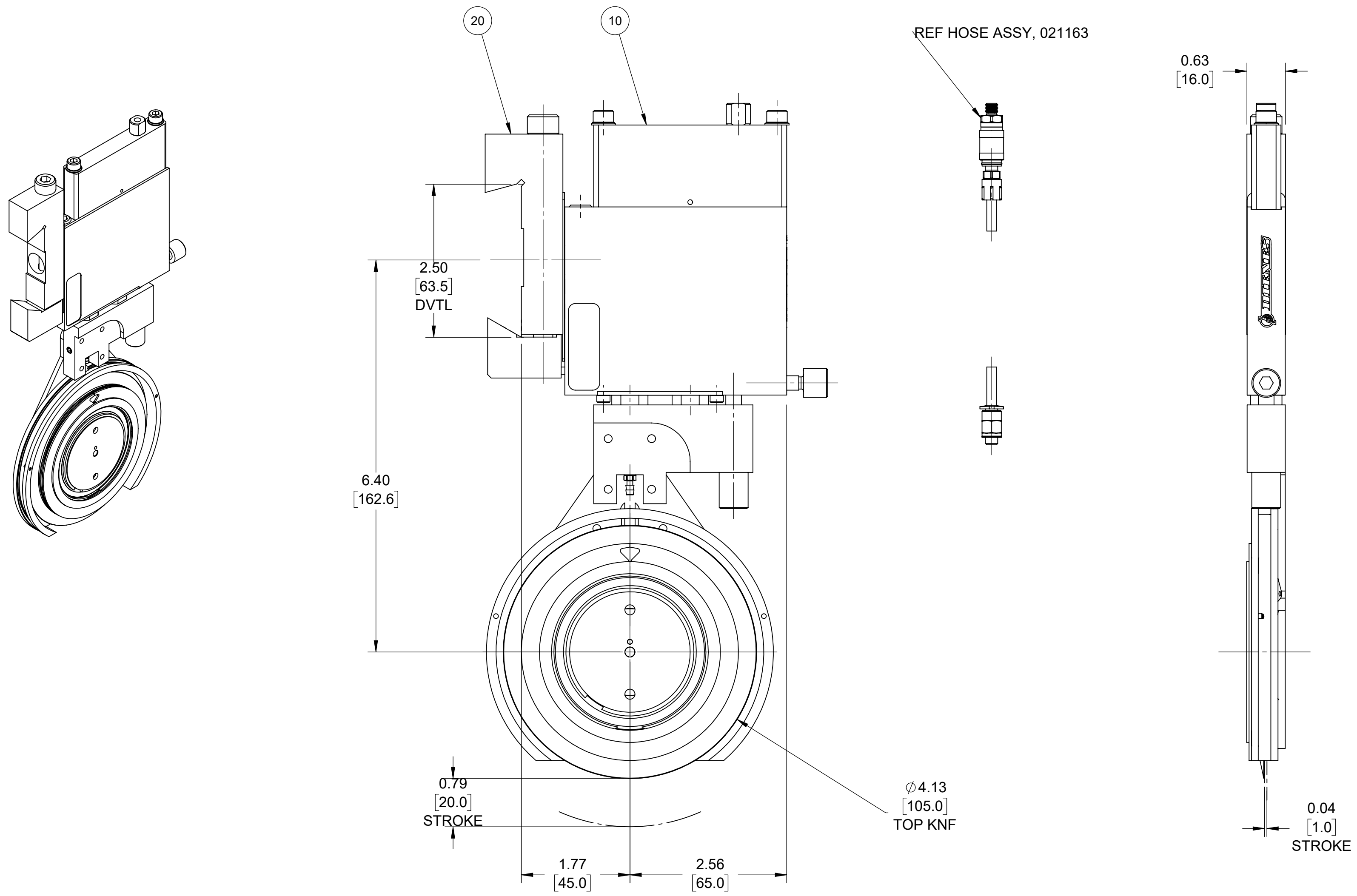


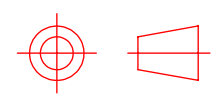
0010	022064-10	1.00	EA	HLDR,PSG16,W/O ADPT,FLAT-BACK
0020	021573	1.00	EA	ADPT,ASSY,PSG16

REVISIONS			
REV.	ERN	DATE	CHC'D BY
-	4499	1/07/2022	RELSD

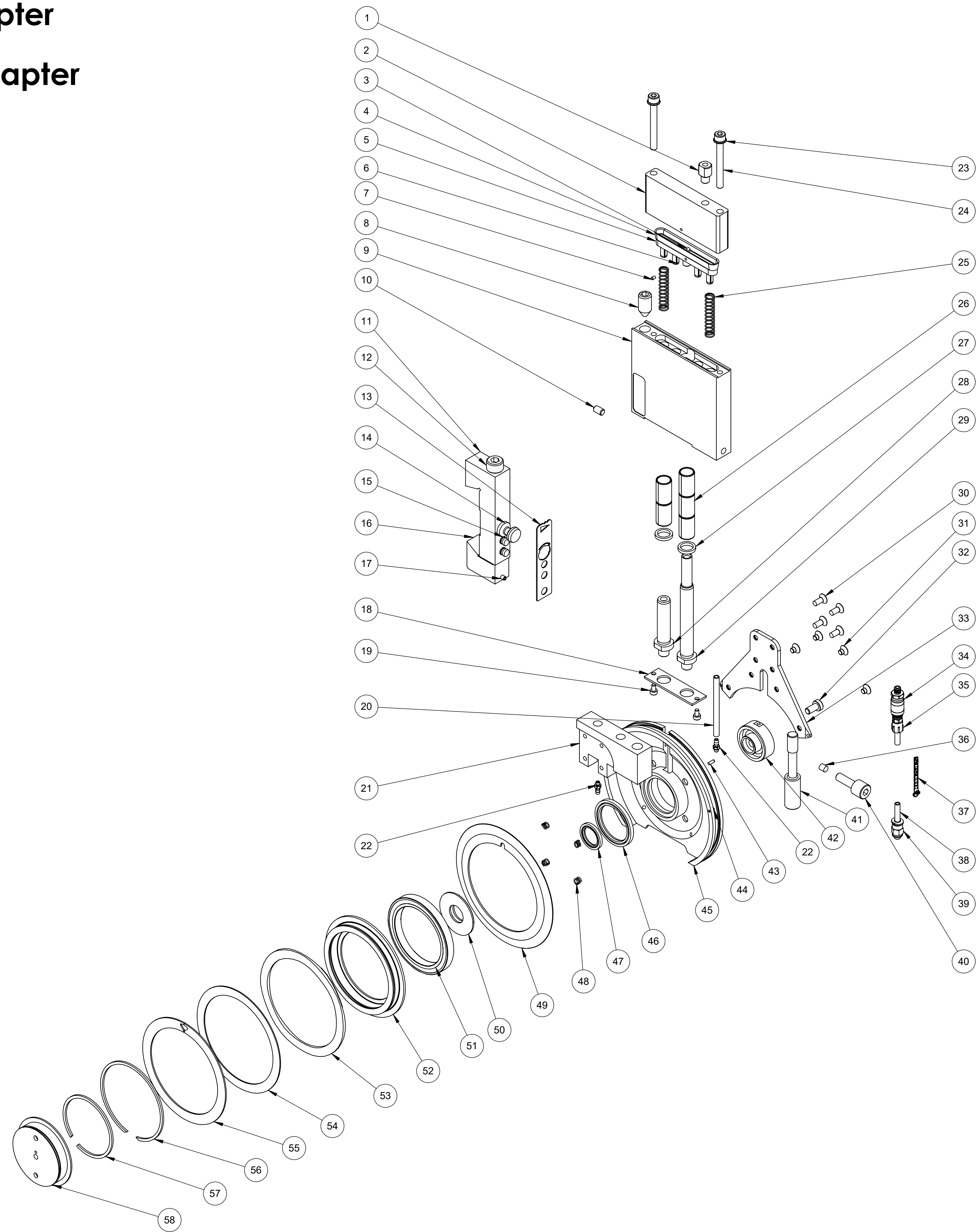


- NOTES:**
1. MATERIAL: SEE BILL OF MATERIAL.
 2. THIS HOLDER IS STANDARD CONFIGURATION.
 3. USE FIXTURE TO ENSURE HOLDER IS ASSEMBLED SQUARE, IF APPLICABLE.
 4. TEST HOLDER FOR STROKE & PNEUMATIC LEAKS.
 5. APPROX. WEIGHT: 2.20 LBS

This document is the property of
Dienes Corporation
 It may contain proprietary information
 DO NOT USE FOR PURPOSES
 OTHER THAN THOSE INTENDED

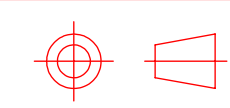
 US PROJECTION		DIENES CORPORATION <i>Spencer Massachusetts</i>	
REFERENCE METRIC DATA		HLDR,PSG16,LH,DVTL,ADPT&HOSE	
Unless Otherwise Noted Dims in Inches		Drawn by:	BGB
Tolerances Unless Noted: .XXXX ±.0005 .XXX ±.005 .XX ±.010 .X ±.015 ANGLE ±1/2° Finish Unless Noted: <input checked="" type="checkbox"/> 125		Date:	01/07/2022
DO NOT SCALE DRAWING		Checked by:	BB
Sheet <u>1</u> of <u>2</u>		Date:	01/07/2022
Drawing Number		Scale:	3:4
REF DWG: P3105-0005 / 245A429D01001		Drawing Number	C021123
		Rev.	-
For Internal DIENES CORPORATION Use Only			

PSG16 Shear Cut Holder W/ Dvfl Adapter
Dienes No. 021123
PSG16 Shear Cut Holder W/O Dvfl Adapter
Dienes No. 022064-10



ITEM NO.	PART NUMBER	DESCRIPTION	QTY.
1	022198	ADPT,NIPPLE,1/4-32M X M5F	1
2	02428	CYLINDER,PRESSURE	1
3	244B010803010	PIN,BOLT,M6x1x14,5	1
4	02724	GASKET	1
5	244B070801010	PLUNGER,PSG16	1
6	650977	PIN,GROOVED,M5X16	4
7	656818	PIN,DOWEL,M2X3	1
8	021576	SCR,SET,FL PT, M10X18 MODIFIED	1
9	245E100069010	BODY,HLDR,PSG16	1
10	614702	SCR,SET,FL PT,M5X8	1
11	245E086101001	ADAPTER,PSG16	1
12	613708	SCR,CAP,SOC HD,M8X100	1
13	245E070065020	PLATE,ANGLE,CANT,30° PSG16	1
14	245C020394001	STUD,CLAMP	1
15	234E010109030	PIN,DOWEL,M6X8, ISO 2338	2
16	415507	CLAMP,DOVETAIL	1
17	616330	PIN,SPRING M3X6	1
18	245C060866010	PLATE,RETAIN, PSG16	1
19	613446	SCR,CAP,SOC HD,M3X5	2
20	021714	TUBING,4MM ODX2.6MM ID-BLUE	1
21	245C070469010	BLOCK,ADJUSTMENT	1
22	021797	FITTING,BARB,MALE,M3X4MM TUBE	2
23	650014	WASH,PLAIN,M5,BRASS	2
24	613582	SCR,CAP,SOC HD,M5X45	2
25	021709	SPRG,COMP,7,5MMX 0,7 X 56,8LG	2
26	021600	BUSHING,DU 10x12x20	5
27	0FWDICH010001	PISTON,SEAL	2
28	021577	SHAFT,PSG 16MM	1
29	021582	PISTON ROD,PSG16	1
30	021682	SCR,CAP,FL TORX HD,M4X9,5	4
31	021681	SCR,CAP,FL TORX HD,M4X4,8	4
32	617164	SCR,CAP,LO SOC HD,M5X10	1
33	245C100471040	PLATE,RETAIN,0°, PSG16	1
34	021142	FEMALE SNAP CONNECTOR,M5	1
35	021930	COUPLING PLUG, M4 TUBE, TYPE KS	1
36	021633	CLAMPING PIECE	1
37	33686-0007	LOGO DECAL 7.3MMX45MM	1
38	021714	TUBING,4MM ODX2.6MM ID-BLUE	1
39	651444	CONN,STR,MINI,M5-4MM	1
40	022326	SCREW,HAND M6 THD X 30 OAL	1
41	021632	SCREW,ADJ M8 THD X 67 OAL	1
42	021581	AXLE PSG16	1
43	654239	PIN,DOWEL,M2X5,5	1
44	655574	PIN,DOWEL,M2X4	2
45	021629	GUARD HOUSING,KNIFE,PSG16	1
46	021584	SEAL,ROD,AIRZET,PR-30 PSG16	1
47	021585	SEAL,ROD,AIRZET,PR-15 PSG16	1
48	021252	SPRG,COMP,0.193ODX.030X.335LG	4
49	22138	KNF,DI,105X075X1.2,DB,G,52,30°	1
50	245C040414010	COVER	1
51	023008	BRG,BALL,50X65X7	1
52	021580	COLLAR,KNIFE-PSG 16MM	1
53	021522	SPRG,BELLEVILLE 89,5X75,5X0,4	2
54	021801	DISC (WASHER) 90X75X0,8	1
55	022589	RING,RETAINING,EXT Ø73MM	1
56	021525	RING,RETAINING,INT Ø67,3X1,5	1
57	021526	RING,RETAINING,EXT Ø52,4X1,5	1
58	021579	CARRIER,BRG,DF19/PSG16	1

This document is the property of Dienes Corporation. It may contain proprietary information. DO NOT USE FOR PURPOSES OTHER THAN THOSE INTENDED.

 US PROJECTION		DIENES CORPORATION <i>Spencer Massachusetts</i> HLDR,PSG16,LH,DVTL,ADPT&HOSE	
REFERENCE METRIC DATA		Unless Otherwise Noted Dims in Inches	
DIM	TOL	Drawn by:	BGB
O.D.		Date:	01/07/2022
I.D.		Checked by:	BB
THK.		Date:	01/07/2022
REF DWG:		Scale:	3:4
		Sheet <u>2</u> of <u>2</u>	Drawing Number D021123
		Rev. -	
		For Internal DIENES CORPORATION Use Only	