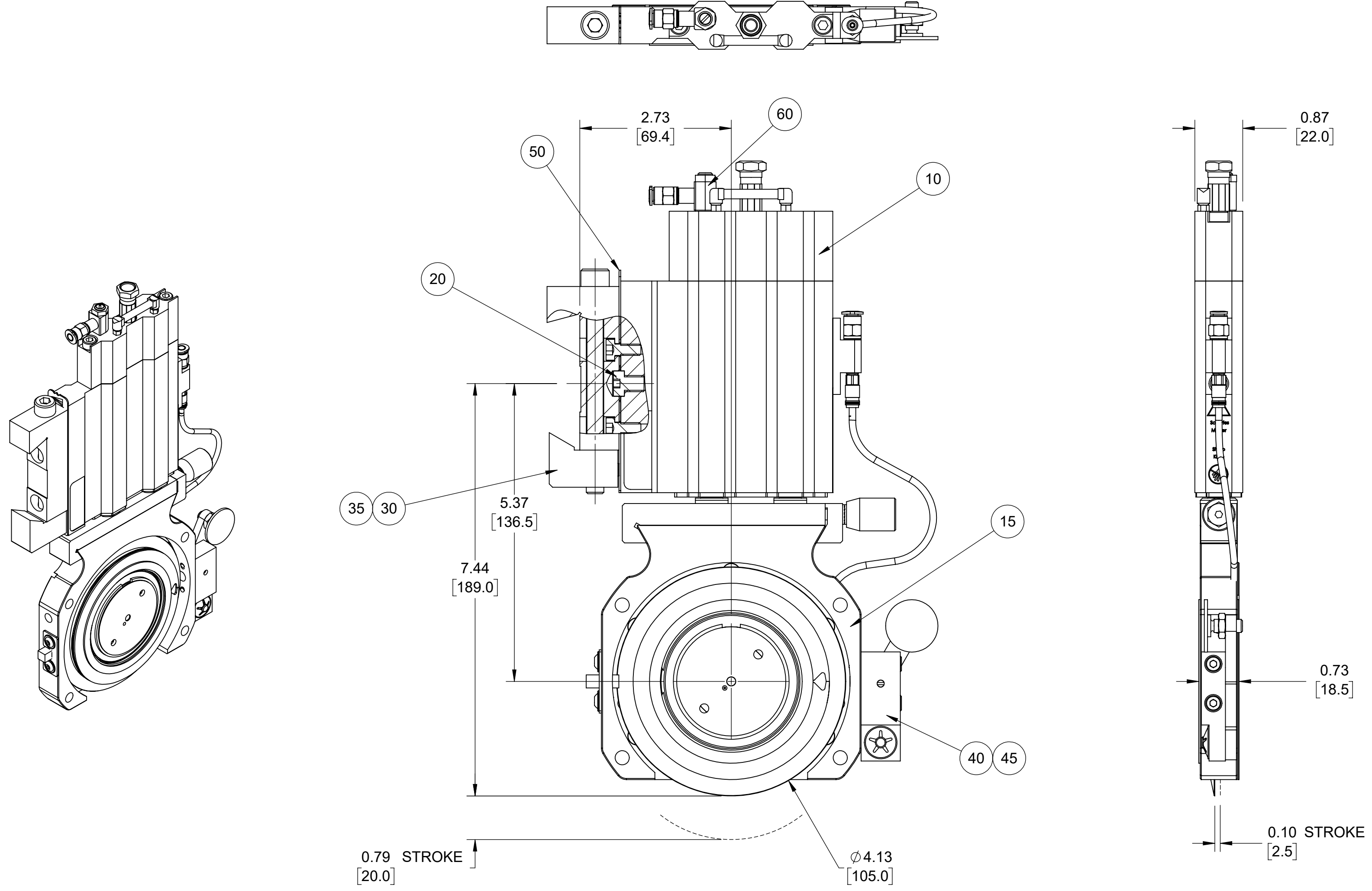


User	Component	Qty per Stk	UM	Description
0010	245AA03001001	1.00	EA	BODY,HLDR (HI) DF19
0015	245A973006001	1.00	EA	ASSY,HEAD,DF19 (DISH)
0020	234E020120010	1.00	EA	STUD,THD, M8XXØ12X14 OAL
0030	415865	1.00	EA	ASSY,ADPT,DTL,DF19 P3105,M
0035	617220	2.00	EA	SCR,CAP,LO SOC HD,M6X12 FS
0040	245A964002001	1.00	EA	ES-TAB, DF19 LH
0045	613516	2.00	EA	SCR,CAP,SOC HD,M4X20 FS
0050	245D110715020	1.00	EA	PLATE,ANGLE 30',CANT,DF19
0060	650931	1.00	EA	VALVE,SUPPLY FLOW CONTROL M5

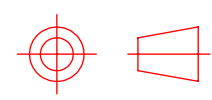
REVISIONS			
REV.	ERN	DATE	CHC'D BY
-	3568	2/22/07	RELSD
A	3864-1	4/21/10	BGB
B	4499	4/12/21	BGB



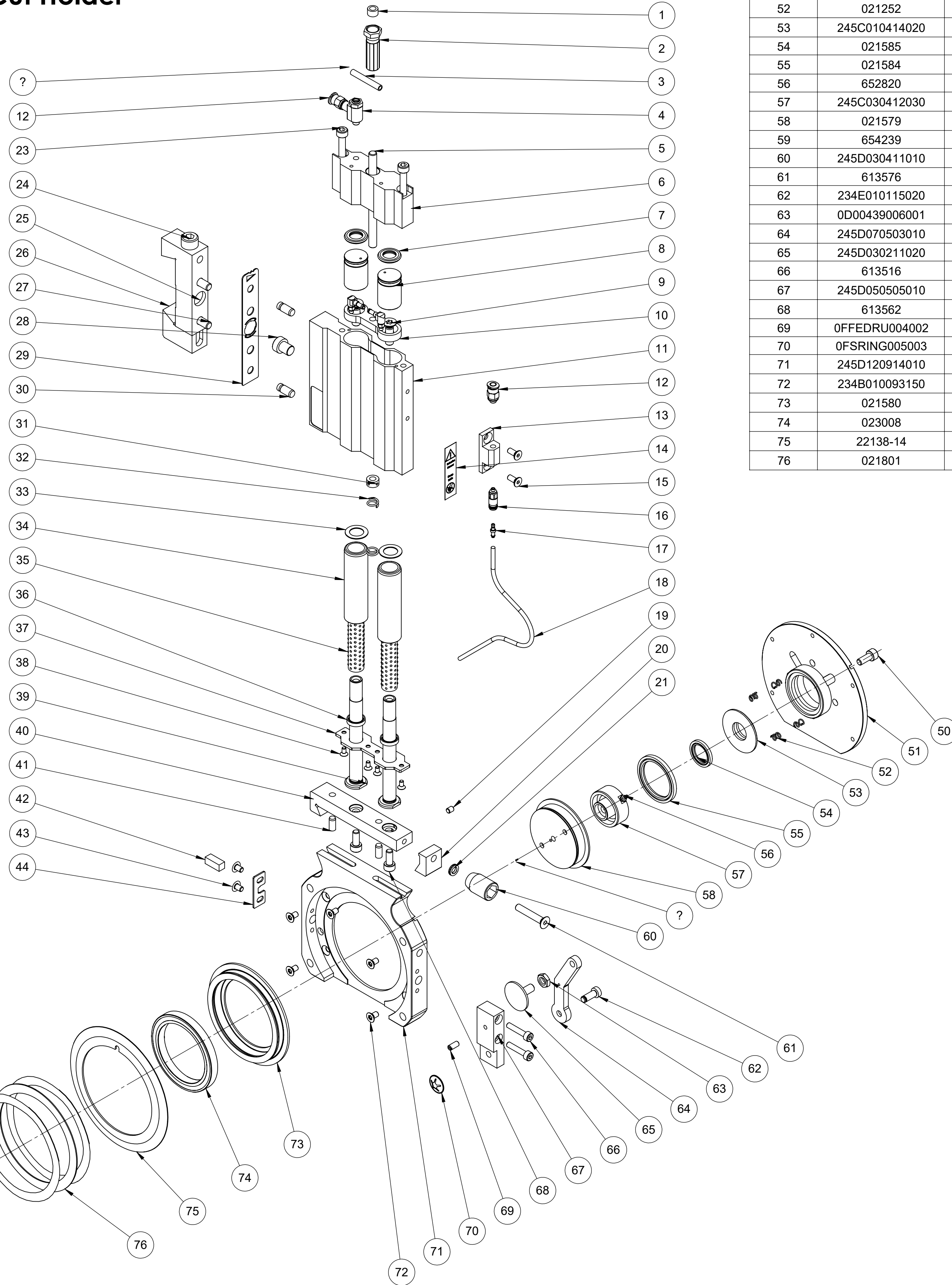
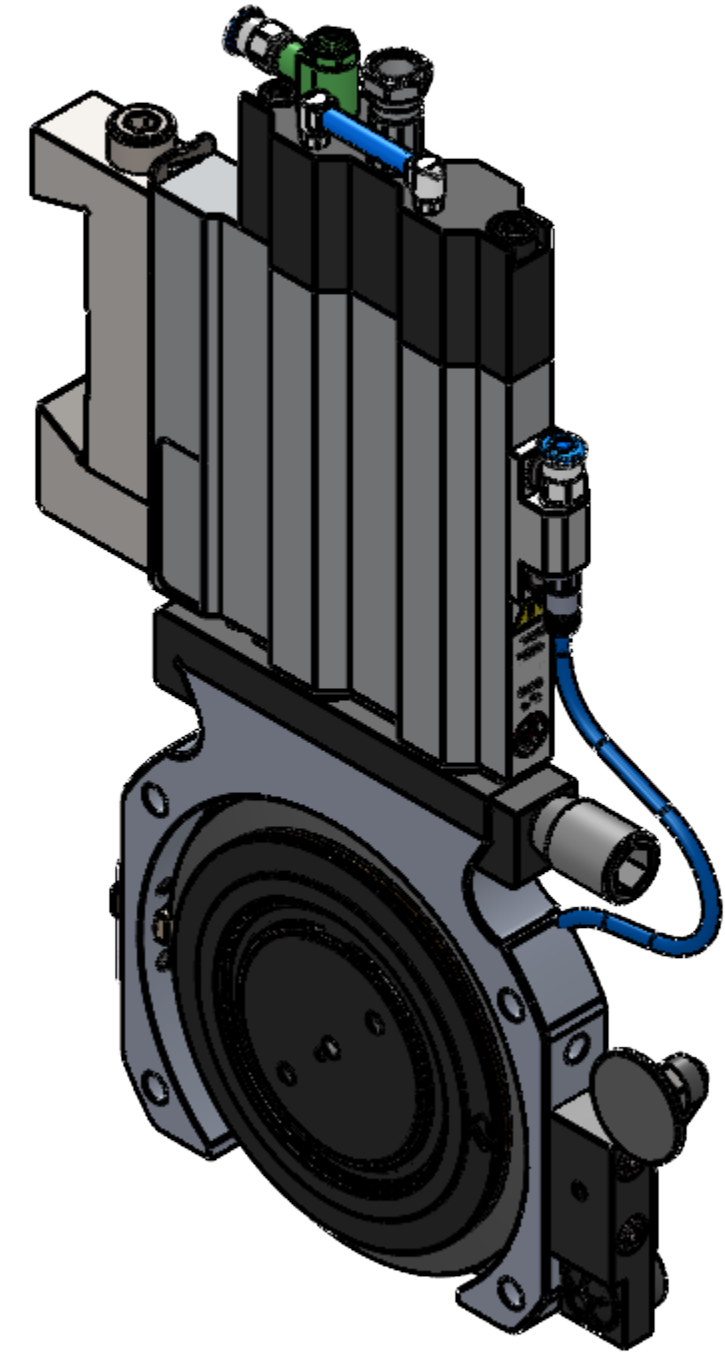
**NOTES:**

1. MATERIAL: SEE BILL OF MATERIAL.
2. THIS HOLDER IS STANDARD CONFIGURATION.
3. USE FIXTURE TO ENSURE HOLDER IS ASSEMBLED SQUARE, IF APPLICABLE
4. TEST HOLDER FOR STROKE & PNEUMATIC LEAKS.
5. APPROX. WEIGHT: 5.09 LBS

This document is the property of  
**Dienes Corporation**  
 It may contain proprietary information  
 DO NOT USE FOR PURPOSES  
 OTHER THAN THOSE INTENDED

 <b>US PROJECTION</b>		<b>DIENES CORPORATION</b> <i>Spencer Massachusetts</i>	
<b>HLDR,DF19,LH HI,W/DVT,DISH</b>		Unless Otherwise Noted Dims in Inches	
<b>REFERENCE METRIC DATA</b>		Tolerances Unless Noted: .XXXX ±.0005 .XXX ±.005 .XX ±.010 FRACT: ±.015 ANGLE ±1/2° Finish Unless Noted: <input checked="" type="checkbox"/> 125	Drawn by: EP Date: 10/01/2021 Checked by: EP Date: 10/01/2021 Scale: 1:2
O.D.		Drawing Number: <b>CP3105-0006</b>	
I.D.		Sheet <b>1</b> of <b>2</b>	
THK.		Rev. <b>B</b>	
REF DWG:		For Internal DIENES CORPORATION Use Only	

# DF19, LH High, with DVTL Shear Cut Holder Dienes No. P3105-0006



ITEM NO.	PART NUMBER	DESCRIPTION	QTY.
51	245D415A01001	CYLINDER COVER	1
52	021252	SPRING	4
53	245C010414020	CYLINDER COVER	1
54	021585	ROD SEAL	1
55	021584	ROD SEAL	1
56	652820	MALE BARB FITTING	1
57	245C030412030	AXLE	1
58	021579	BEARING CARRIER	1
59	654239	DOWEL PIN	1
60	245D030411010	NUT	1
61	613576	FLAT HEAD SCREW	1
62	234E010115020	ES TAB PIN	1
63	0D00439006001	NUT	1
64	245D070503010	ES TAB SWING ARM	1
65	245D030211020	ADJUSTMENT DISC	1
66	613516	CAP SCREW	2
67	245D050505010	ES TAB BODY	1
68	613562	CAP SCREW	2
69	0FFEDRU004002	SPRING LOADED DEVICE	1
70	0FSRING005003	CLAMPING DISC	1
71	245D120914010	LOWER HEAD GUARD	1
72	234B010093150	TORX SCREW	5
73	021580	KNIFE COLLAR	1
74	023008	BEARING	1
75	22138-14	TOP KNIFE	1
76	021801	DISC	1

ITEM NO.	PART NUMBER	DESCRIPTION	QTY.
1	245E010466020	SCREW LOCKING RING	1
2	10084580	NUT	1
3	655830	TUBING	1
4	650931	VALVE, SUPPLY FLOW CONTROL M5	1
5	245D010404010	SPINDLE	1
6	10053385	CYLINDER	1
7	0FWDICH018003	PISTON SEAL	2
8	245D020401010	PISTON	2
9	022594	COUNTERSUNK SCREW	2
10	10053391	PISTON PLATE	1
11	245D100859010	HOLDER BODY	1
12	651444	MINI STRAIGHT CONNECTOR	3
13	245D040417010	FITTING BLOCK	1
14	411956	DECAL, WARNING, "SHARP KNIFE" FS	1
15	614096	FLAT HEAD SCREW	2
16	654513	QUICK DISCONNECT CONNECTOR	1
17	654242	MALE COUPLING	1
18	652822	TUBING	1
19	654294	SET SCREW	1
20	245D020410010	DOVETAIL CLAMP	1
21	023313	SNAP RING	1
22	10053395	MALE CONNECTOR	2
23	613580	CAP SCREW	2
24	654002	CAP SCREW	1
25	245D030281020	DOVETAIL BODY	1
26	422002	DOVETAIL CLAMP	1
27	617220	CAP SCREW	2
28	234E020120010	THREADED STUD	1
29	245D110715020	30° CANT ANGLE PLATE	1
30	234E010109020	PIN	2
31	245D010405010	NUT	1
32	0FFEDER010004	SPRING	1
33	234E020144010	WASHER	2
34	0FKUGBÜ010001	GUIDE BUSHING	2
35	0FKUGBÜ010002	BALL CAGE	2
36	0FWDICH010002	PISTON SEAL	2
37	245D070408010	COVER PLATE	1
38	650221	FLAT HEAD SCREW	4
39	245D020407010	GUIDE SHAFT	2
40	245D100777010	CARRIER PLATE	1
41	616054	DOWEL PIN	2
42	245D030243020	WICK	1
43	0FSCHRA004016	FLANGE BUTTON HEAD SCREW	2
44	245D030921010	OIL WICK BRACKET	1
45	021522	SPRING	2
46	022589	EXTERNAL RETAINING RING	1
47	021525	INTERNAL RETAINING RING	1
48	021583	WASHER	1
49	021526	EXTERNAL RETAINING RING	1
50	613562	CAP SCREW	1

This document is the property of Dienes Corporation. It may contain proprietary information. DO NOT USE FOR PURPOSES OTHER THAN THOSE INTENDED.

 <b>US PROJECTION</b>		<b>DIENES CORPORATION</b> <i>Spencer Massachusetts</i> <b>HLDR, DF19, LH HI, W/DVT, DISH</b>	
REFERENCE METRIC DATA		Unless Otherwise Noted Dims in Inches	Drawn by: EP
DIM	TOL	Tolerances Unless Noted: XXX ±.005 XX ±.005 X ±.010 FRACT. ±.015 ANGLES ±1/2° English Unless Noted: <input checked="" type="checkbox"/>	Date: 10/01/2021
O.D.		DO NOT SCALE DRAWING	Checked by: EP
I.D.			Date: 10/01/2021
THK.			Scale: 1:2
REF DWG:		Sheet <u>2</u> of <u>2</u>	Drawing Number: <b>DP3105-0006</b>
			Rev: <b>B</b>
<b>For Internal DIENES CORPORATION Use Only</b>			