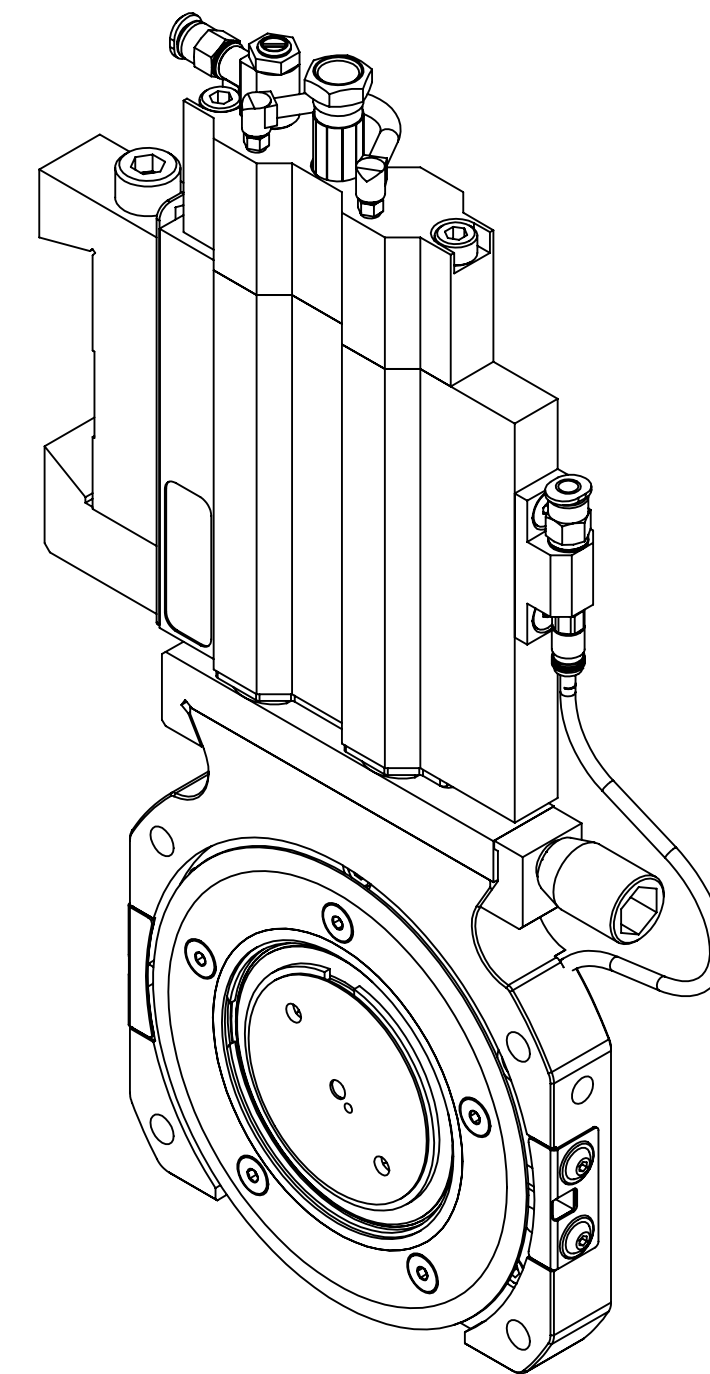
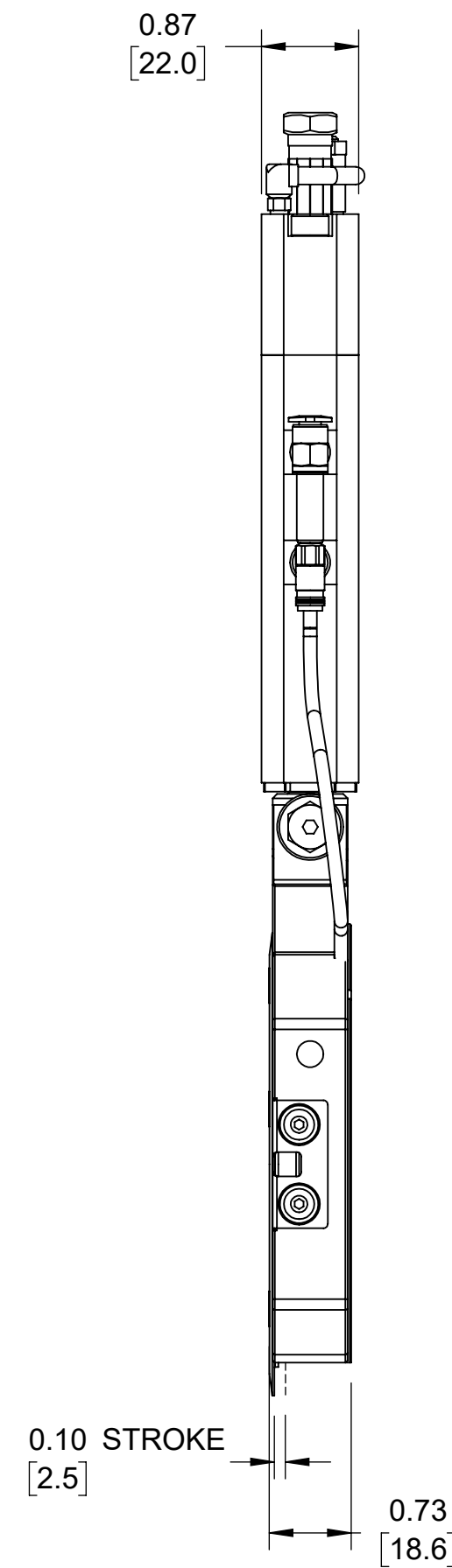
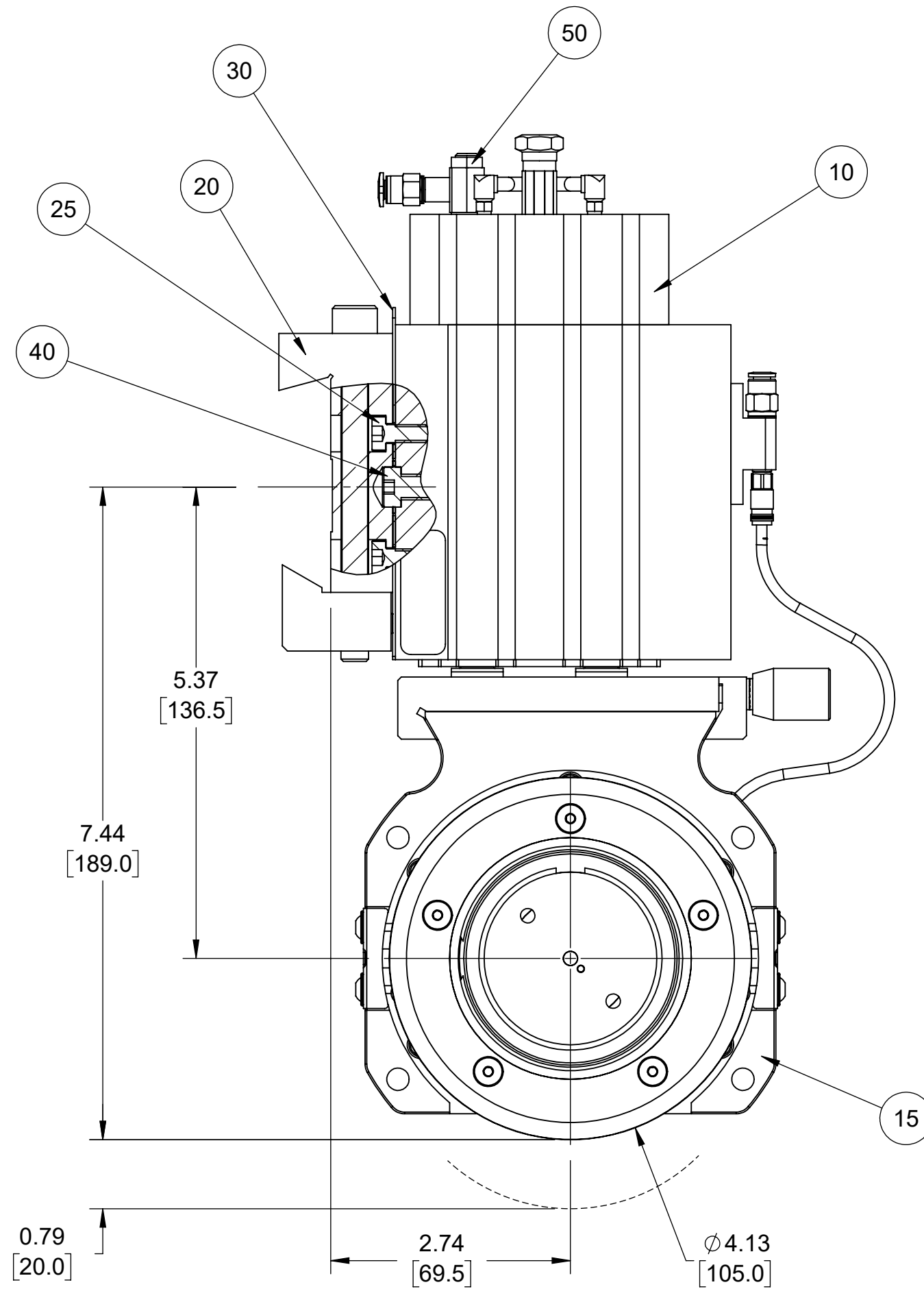


(9N) Single Level Bill of Material - P3105-0016 HLDR,DF19,LH LOW,W/DVT

User	Component	Qty per Stk UM	Description
0010	245AA03002001	1.00 EA	BODY,HLDR (LOW) DF19
0015	245A973003001	1.00 EA	ASSY,HEAD,DF19 (FLAT)
0020	415865	1.00 EA	ASSY,ADPT,DTL,DF19 P3105,M
0025	617220	2.00 EA	SCR,CAP,LO SOC HD,M6X12 FS
0030	245D110715020	1.00 EA	PLATE,ANGLE 30°,CANT,DF19
0040	234E020120010	1.00 EA	STUD,THD, M8XXØ12X14 OAL
0050	650931	1.00 EA	VALVE,SUPPLY FLOW CONTROL M5

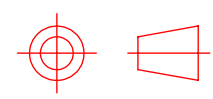
REVISIONS			
REV.	ERN	DATE	CHC'D BY
-	3871	6/11/09	RELSD
A	3864-1	4/21/10	BGB
B	4499	4/13/21	BGB



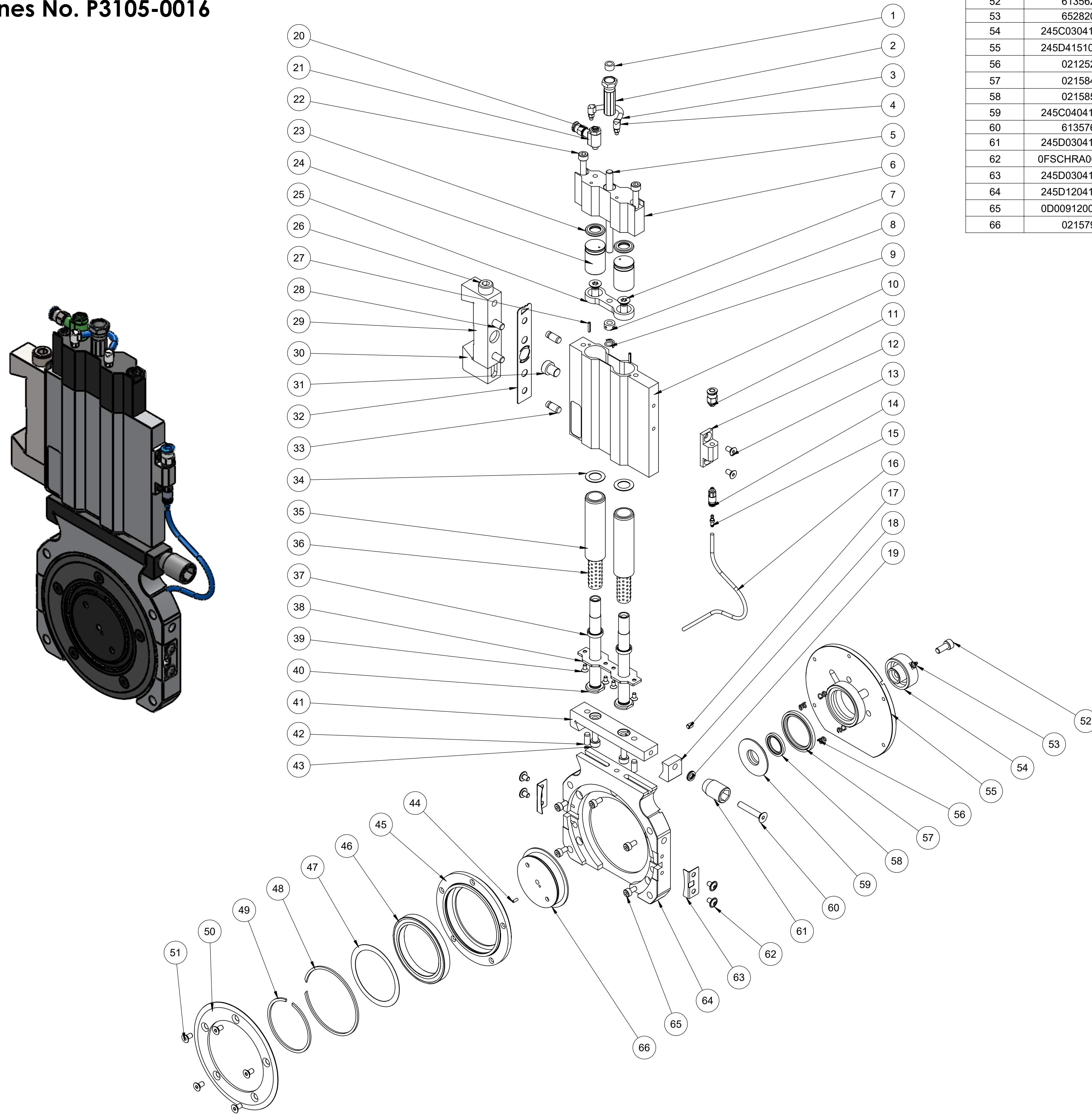
NOTES:

1. MATERIAL: SEE BILL OF MATERIAL.
2. THIS HOLDER IS STANDARD CONFIGURATION.
3. USE FIXTURE TO ENSURE HOLDER IS ASSEMBLED SQUARE, IF APPLICABLE
4. TEST HOLDER FOR STROKE & PNEUMATIC LEAKS.
5. APPROX. WEIGHT: LBS

This document is the property of
Dienes Corporation
 It may contain proprietary information
 DO NOT USE FOR PURPOSES
 OTHER THAN THOSE INTENDED

 US PROJECTION		DIENES CORPORATION <i>Spencer Massachusetts</i> HLDR,DF19,LH LOW,W/DVT	
REFERENCE METRIC DATA		Unless Otherwise Noted Dims in Inches	Drawn by: EP
DIM	TOL	Tolerances Unless Noted:	Date: 10/06/2021
O.D.		.XXXX ±.0005	Checked by: EP
I.D.		.XXX ±.005	Date: 10/06/2021
THK.		.XX ±.010	Scale: 1:2
REF DWG:		FRACT: ±.015	
		ANGLE ±1/2°	
		Finish Unless Noted: ✓	
		DO NOT SCALE DRAWING	Drawing Number
		Sheet 1 of 2	Cp3105-0016
			Rev. B
For Internal DIENES CORPORATION Use Only			

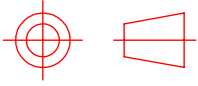
DF19,LH Low,with DVTL Shear Cut Holder Dienes No. P3105-0016



ITEM NO.	PART NUMBER	DESCRIPTION	QTY.
51	614094	FLAT HEAD SCREW	5
52	613562	CAP SCREW	1
53	652820	MALE BARB FITTING	1
54	245C030412030	AXLE	1
55	245D415101001	CYLINDER COVER	1
56	021252	SPRING	4
57	021584	ROD SEAL	1
58	021585	ROD SEAL	1
59	245C040414020	CYLINDER COVER	1
60	613576	FLAT HEAD SCREW	1
61	245D030411010	NUT	1
62	0FSCHRA004016	FLANGE BUTTON HEAD SCREW	4
63	245D030416010	OILWICK BRACKET	2
64	245D120412010	LOWER HEAD GUARD	1
65	0D00912004001	CAP SCREW	5
66	021579	BEARING CARRIER	1

ITEM NO.	PART NUMBER	DESCRIPTION	QTY.
1	245E010466020	SCREW LOCKING RING	1
2	245D403101001	NUT	1
3	655830	TUBING	1
4	10053395	MALE CONNECTOR	2
5	245D010404010	SPINDLE	1
6	10053385	CYLINDER	1
7	022594	COUNTERSUNK SCREW	2
8	245D010405010	NUT	1
9	0FFEDER010004	SPRING	1
10	245D100860010	HOLDER BODY	1
11	651444	MINI STRAIGHT CONNECTOR	2
12	245D040417010	FITTING BLOCK	1
13	614096	FLAT HEAD SCREW	2
14	654513	QUICK DISCONNECT FITTING	1
15	654242	MALE COUPLING	1
16	652822	TUBING	1
17	654294	SET SCREW	1
18	245D020410010	DOVETAIL CLAMP	1
19	023313	SNAP RING	1
20	651444	MINI STRAIGHT CONNECTOR	1
21	650931	VALVE, SUPPLY FLOW CONTROL M5	1
22	613580	CAP SCREW	2
23	0FWDICH018003	PISTON SEAL	2
24	245D020401010	PISTON	2
25	10053391	PISTON PLATE	1
26	654002	CAP SCREW	1
27	0D01481002005	SPLIT PIN	2
28	617220	CAP SCREW	2
29	245D030281020	ADAPTER BODY	1
30	422002	DOVETAIL CLAMP	1
31	234E020120010	STUD	1
32	245D110715020	30' CANT ANGLE PLATE	1
33	234E010109020	PIN	2
34	234E020144010	WASHER	2
35	0FKUGBÜ010001	GUIDE BUSHING	2
36	0FKUGBÜ010002	BALL CAGE	2
37	0FWDICH010002	PISTON SEAL	2
38	245D070408010	COVER PLATE	1
39	650221	FLAT HEAD SCREW	4
40	245D020407010	GUIDE SHAFT	2
41	245D100771010	CARRIER PLATE	1
42	616054	DOWEL PIN	2
43	613562	CAP SCREW	2
44	654239	DOWEL PIN	1
45	245C090886020	KNIFE CARRIER	1
46	023008	BEARING	1
47	021583	WASHER	1
48	021525	INTERNAL RETAINING RING	1
49	021526	EXTERNAL RETAINING RING	1
50	022502	TOP KNIFE	1

This document is the property of Dienes Corporation. It may contain proprietary information. DO NOT USE FOR PURPOSES OTHER THAN THOSE INTENDED.

 US PROJECTION		DIENES CORPORATION <i>Spencer Massachusetts</i> HLDR,DF19,LH LOW,W/DVT	
REFERENCE METRIC DATA		Unless Otherwise Noted Dims in Inches	Drawn by: EP
DIM	TOL	Tolerances Unless Noted: XXX ±.005 XX ±.005 X ±.010 FRACT. ±.015 ANGLES ±1/2° English Unless Noted: <input checked="" type="checkbox"/> ¹⁶ / ₃₂	Date: 10/06/2021
O.D.		DO NOT SCALE DRAWING	Checked by: EP
I.D.			Date: 10/06/2021
THK.			Scale: 1:2
REF DWG:		Sheet <u>2</u> of <u>2</u>	Drawing Number: Dp3105-0016
			Rev. B
For Internal DIENES CORPORATION Use Only			