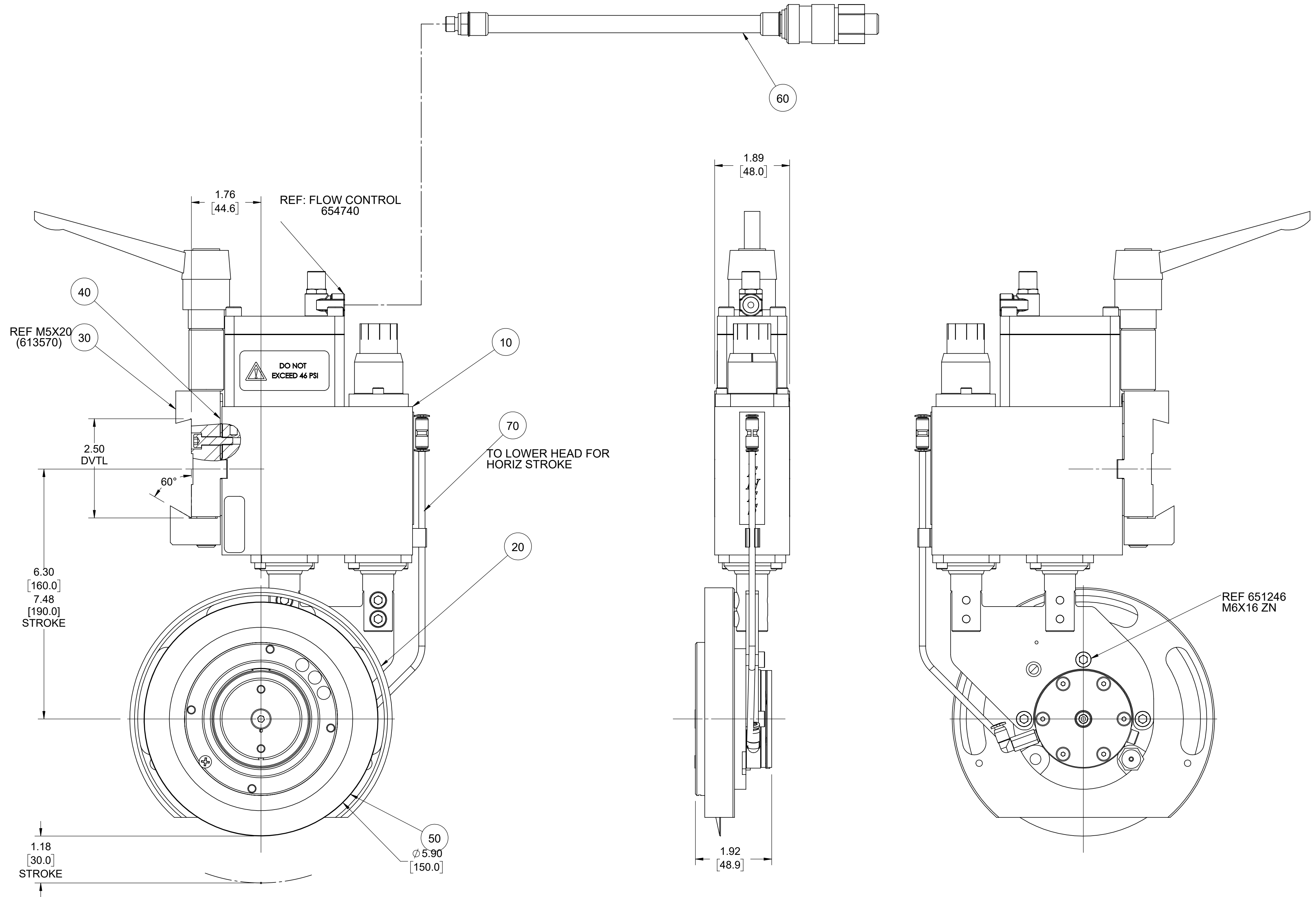
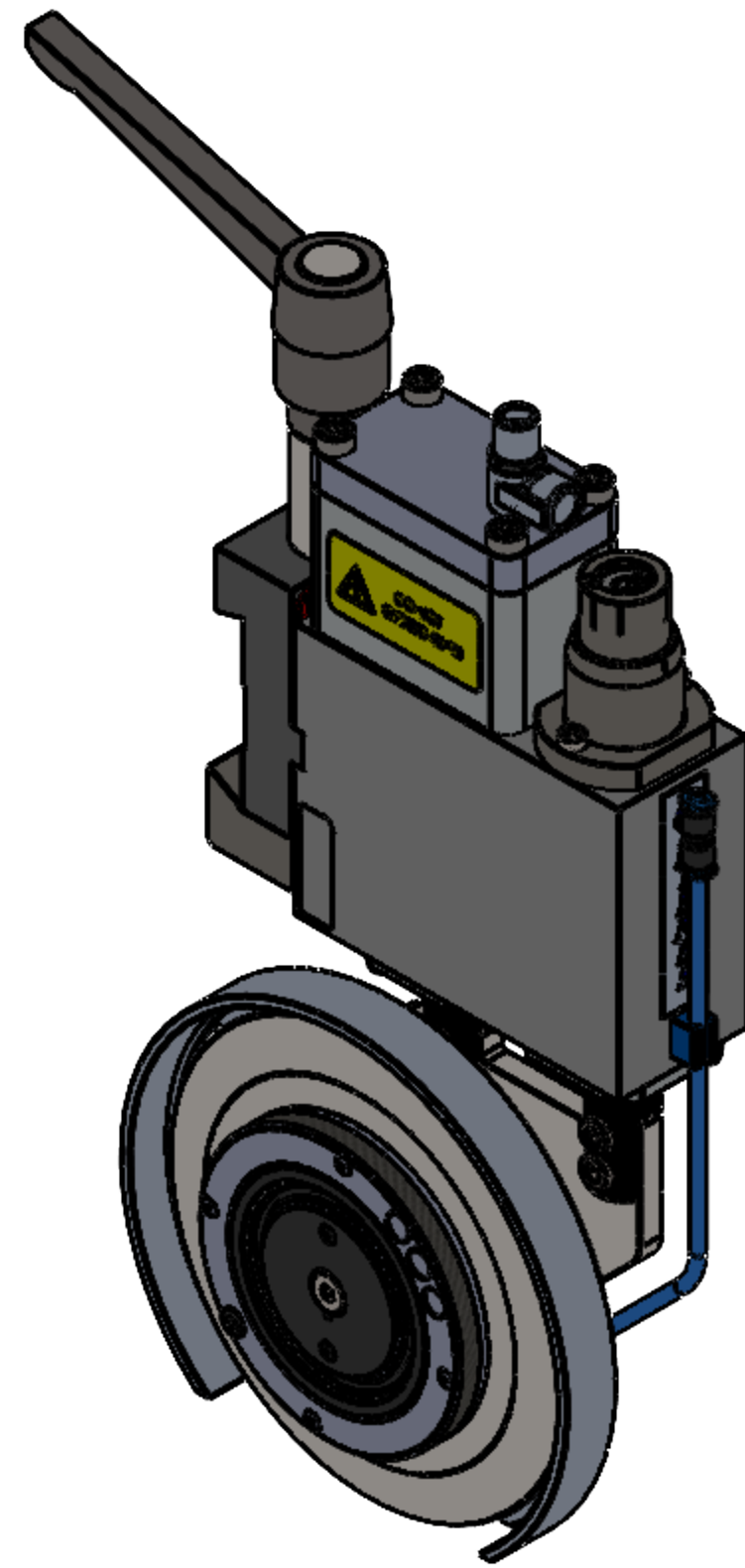


User Component Qty UM Description

0010	411644	1.00	EA	BODY,HLDR,DF50-150/180(DUAL
0020	411646	1.00	EA	HEAD,KNIFE,DF50-150
0030	021551-0003	1.00	EA	ADPT,ASSY,DTL,(KIP HNDL)P3070
0040	021553-0002	1.00	EA	ANGLE PLATE 30'-PSG50
0050	021563-1	1.00	EA	KNF,DI,150X080X2.5,DB,P,D2
0060	02134-09	1.00	EA	HOSE,AIR,TYPE 2 - 16" W/CPLR
0070	410811	1.00	EA	AIR SUPPLY,DUAL

REVISIONS			
REV.	ERN	DATE	CHK'D BY
-	4499	9/29/2020	RELSD



**NOTES:**

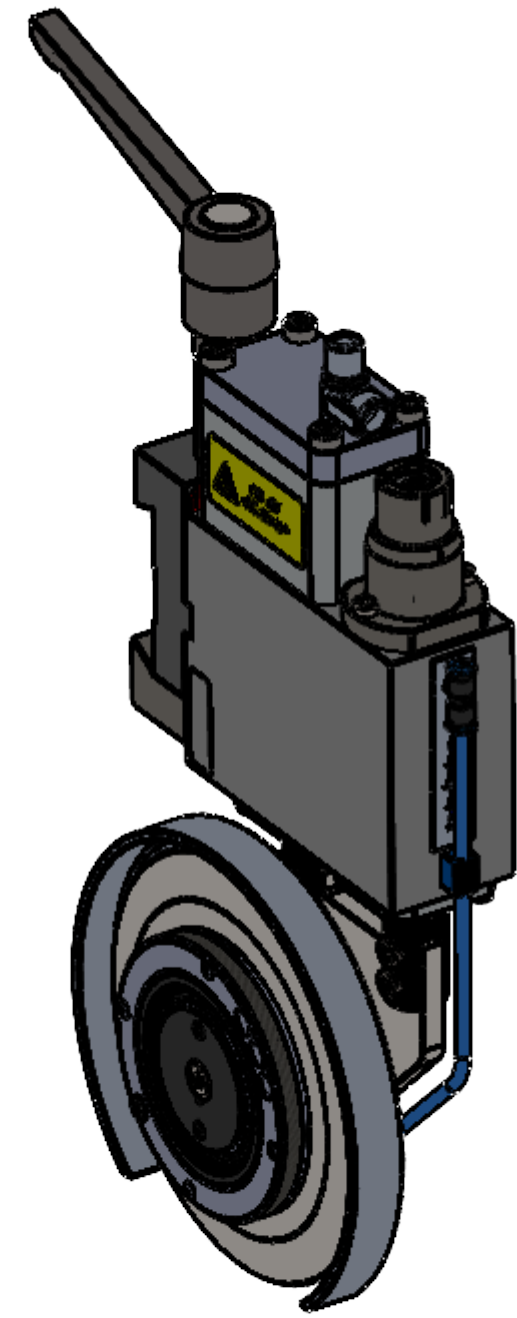
1. MATERIAL: SEE BILL OF MATERIAL.
2. THIS HOLDER IS STANDARD CONFIGURATION.
3. USE FIXTURE TO ENSURE HOLDER IS ASSEMBLED SQUARE, IF APPLICABLE.
4. TEST HOLDER FOR STROKE & PNEUMATIC LEAKS.
5. APPROX. WEIGHT: 16.92 LBS

This document is the property of Dienes Corporation. It may contain proprietary information. DO NOT USE FOR PURPOSES OTHER THAN THOSE INTENDED.

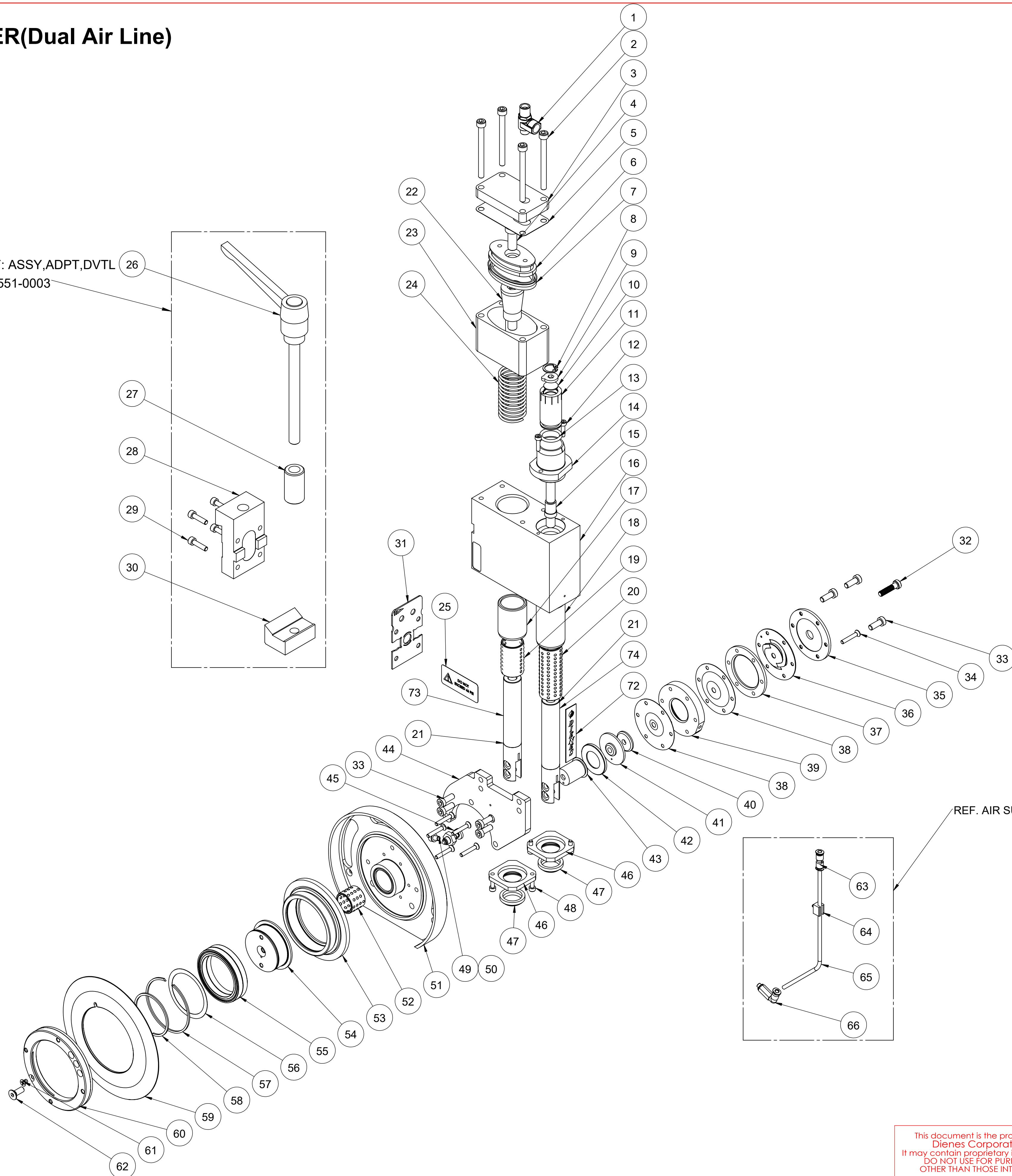
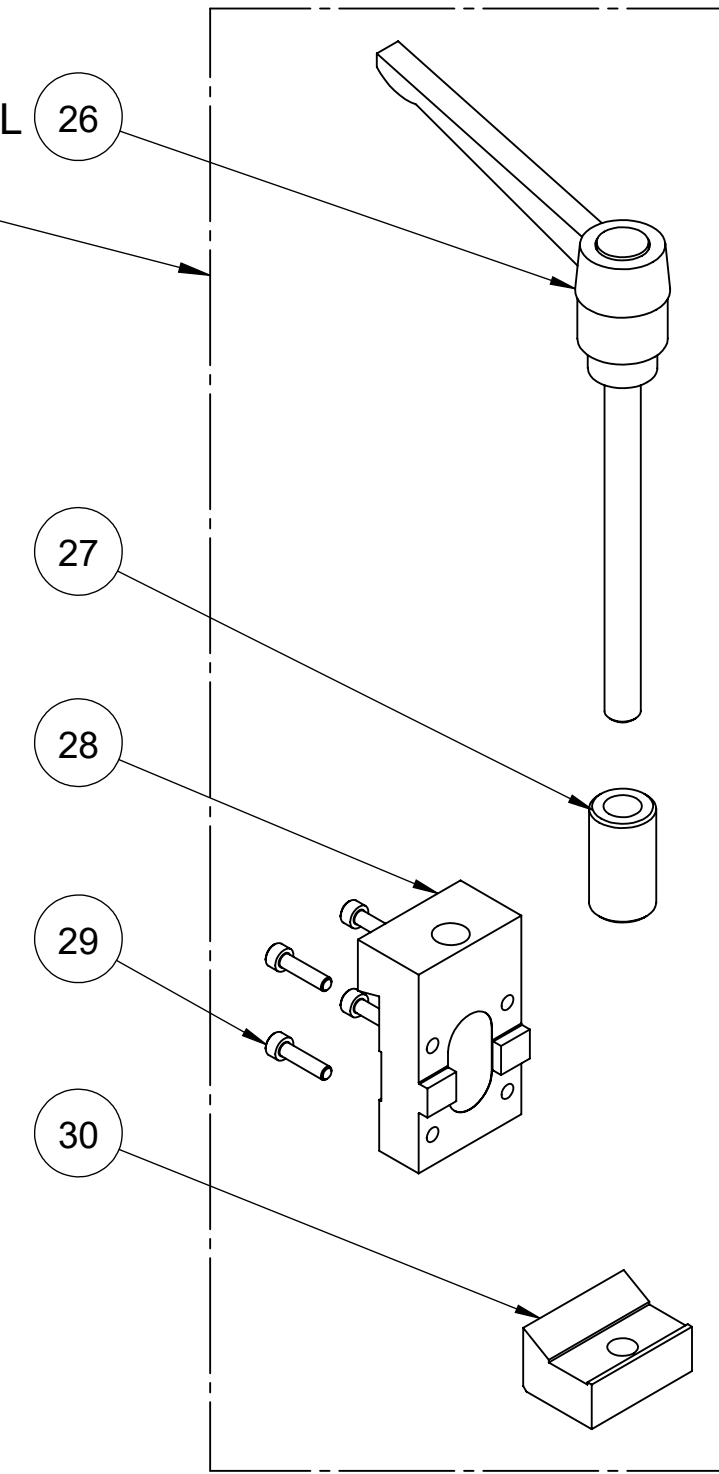
<p>US PROJECTION</p>		<p><b>DIENES CORPORATION</b> Spencer Massachusetts</p>	
		<p><b>HLDR,DF50-150,STD,DVT,KIP</b></p>	
REFERENCE METRIC DATA		Unless Otherwise Noted Dimensions Are In Inches Tolerances Unless Noted: XXX ±.005 XX ±.010 FRACT. ±.015 ANGLES ±1/2° Finish Unless Noted: ✓ DO NOT SCALE DRAWING	
DIM	TOL	Drawn by:	BGB
O.D.		Date:	09/29/2020
I.D.		Checked by:	BB
THK.		Date:	09/29/2020
REF DWG:	P3158-0001	Scale:	2:3
		Drawing Number	DP3135-0001
		Rev.	-
		Sheet 1 of 2 For Internal DIENES CORPORATION Use Only	



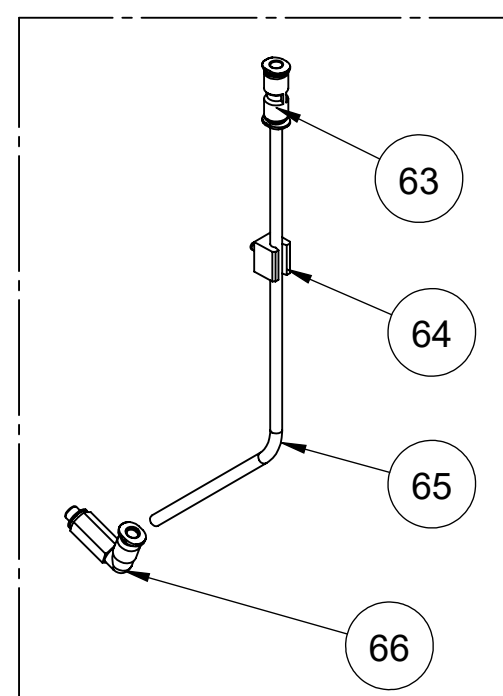
# DF50-150 SHEAR CUT HOLDER(Dual Air Line) DIENES NO. P3135-0001



REF: ASSY,ADPT,DVTL  
021551-0003



REF. AIR SUPPLY,DUAL 410811



ITEM NO.	PART NUMBER	DESCRIPTION	QTY.
1	654740	VALVE,SUPPLY FLOW CONTROL G1/8	1
2	613646	SCR,CAP,SOC HD,M6X70	4
3	245C080525010	CYLINDER COVER	1
4	617340	SCR,CAP,LO SOC HD,M10X25	1
5	245C080528010	GASKET	1
6	650770	PISTON	1
7	022725	RING,SEAL	1
8	022129	RING,RETAIN	1
9	234E020061010	WASHER,NOSE	1
10	234E030036030	DISC,16X1	1
11	245C030530010	NUT,DF50 UPPER BODY,	1
12	613512	SCR,CAP,SOC HD,M4X16	2
13	650779	O-RING	1
14	245C050533010	CAP,PROTECTIVE	1
15	234B020204010	PIN,THREADED,M10X63	2
16	245C130529010	BODY,HLDR DF50	1
17	650771	BRG,BUSHING,STEEL,26X32X42	1
18	650772	BRG,BUSHING,STEEL,26X32X56	1
19	650773	CAGE,BRG,BRASS,20X26X40	1
20	650774	CAGE,BRG,BRASS,20X26X68	1
74	245C020534010	GUIDE SHAFT	2
22	234B030205010	SCREW,GUIDE SHAFT	2
23	245D137A01001	CYLINDER	1
24	650775	SPRG,COMP,31MMX,2,5WIRE,103	1
25	021757	DECAL,WARNING '46 PSI'	1
26	021499	HAND LEVER,M12(65MM)X140 KIP	1
27	021668	HANDLE, SPACER, 40MM LG	1
28	021886	ADPT,DOVETAIL,PSGS&DF	1
29	613570	SCR,CAP,SOC HD,M5X20	4
30	021496	CLAMPING PIECE	1
31	021553-0002	ANGLE PLATE 30'	1
32	651250	SCR,CAP,LO SOC HD,M6X25 ZN	1
33	651246	SCR,CAP,LO SOC HD,M6X16,ZN	7
34	614104	SCR,CAP,FL SOC HD,M4X25	6
35	245C070540010	COVER,OUTER,62X11X3	1
36	263C070034010	SPRING,CIRCULAR,62X6,1X0,8	1
37	245C070541010	COVER,INNER,62X40X3	1
38	022137	DIAPHRAGM,DF HEAD	2
39	245C070539010	RING,INTERMEDIATE,62X27X9	1
40	245C030548010	PLATE,INTERMEDIATE	1
41	245C040547030	PLATE,INTERMEDIATE,STEPPED	1
42	245D040249010	STOP,END	1
43	245C030546060	AXLE,HEAD,DF50-150	1
44	245C130703010	DF50-180/150 PLATE	1
45	290A079001001	ASSY,PIN,LOCKING DF50, PSG50	1
46	021637	SLEEVE,RETAINING	2
47	650780	WIPER,DIRT	2
48	613508	SCR,CAP,SOC HD,M4X12	4
49	613558	SCR,CAP,SOC HD,M5X8	1
50	651243	GASKET,FIBER(M5)	1
51	245D254A01001	ASSY,GUARD DF50	1
52	651242	CAGE,BRG,BRS,20X26X22	1
53	245C100535020	KNIFE CARRIER,DF50-130/150	1
54	245C060537010	CARRIER,BRG,DF50	1
55	023008	BRG,BALL,50X65X7	2
56	021583	WASH,60,5X50,1X0,3	1
57	021525	RING,RETAINING,INT Ø67,3X1,5	1
58	021526	RING,RETAINING,EXT Ø52,4X1,5	1
59	021563	KNF,DI,150X080X2,5,DB,G,D2	1
60	021638	NUT,RING M75X1,5 DF50	1
61	0D00965004003	SCR,MACH,FL HD,PHLPS,M4X6	1
62	614144	SCR,CAP,FL SOC HD,M6X16	1
63	650320	CONNECTOR, MINI, 4MM-4MM FS	1
64	021741	TUBE HLDR-4mm	1
65	021714	TUBING,4MM ODX2,6MM ID-BLUE	1
66	021713	CONN,EL LG M5-4MM	1
71	613614	SCR,CAP,SOC HD,M6X10	1
72	222637	NAME PLATE,NEW DIENES LOGO	1
73	245E030093010	GUIDE SHAFT,PILLAR 25,5 X174MM (REPLACES ITEM 21 & 22)	1
74	245E020094010	GUIDE SHAFT 20X182MM REPLACES (ITEMS 21 & 15)	1

PLEASE NOTE:  
ITEMS 73 & 74 GUIDE SHAFTS  
ARE ONE PIECE CONSTRUCTION

This document is the property of  
Dienes Corporation  
It may contain proprietary information  
DO NOT USE FOR PURPOSES  
OTHER THAN THOSE INTENDED

 <b>US PROJECTION</b>		<b>DIENES CORPORATION</b> <i>Spencer Massachusetts</i> <b>HLDR,DF50-150,STD,DVT,KIP</b>	
REFERENCE METRIC DATA		Unless Otherwise Noted Dims in Inches	Drawn by: BGB
DIM	TOL	Tolerances Unless Noted: XXX ±.005 XX ±.015 XX ±.010 FRACT. ±.010 ANGLES ±1/2° English Unless Noted: <input checked="" type="checkbox"/> $\frac{1}{16}$ DO NOT SCALE DRAWING	Date: 09/29/2020
O.D.			Checked by: BB
I.D.			Date: 09/29/2020
THK.			Scale: 1:2.5
REF DWG: P3130-0001			Sheet 2 of 2
			Drawing Number <b>DP3135-0001</b>
			Rev. -
For Internal DIENES CORPORATION Use Only			