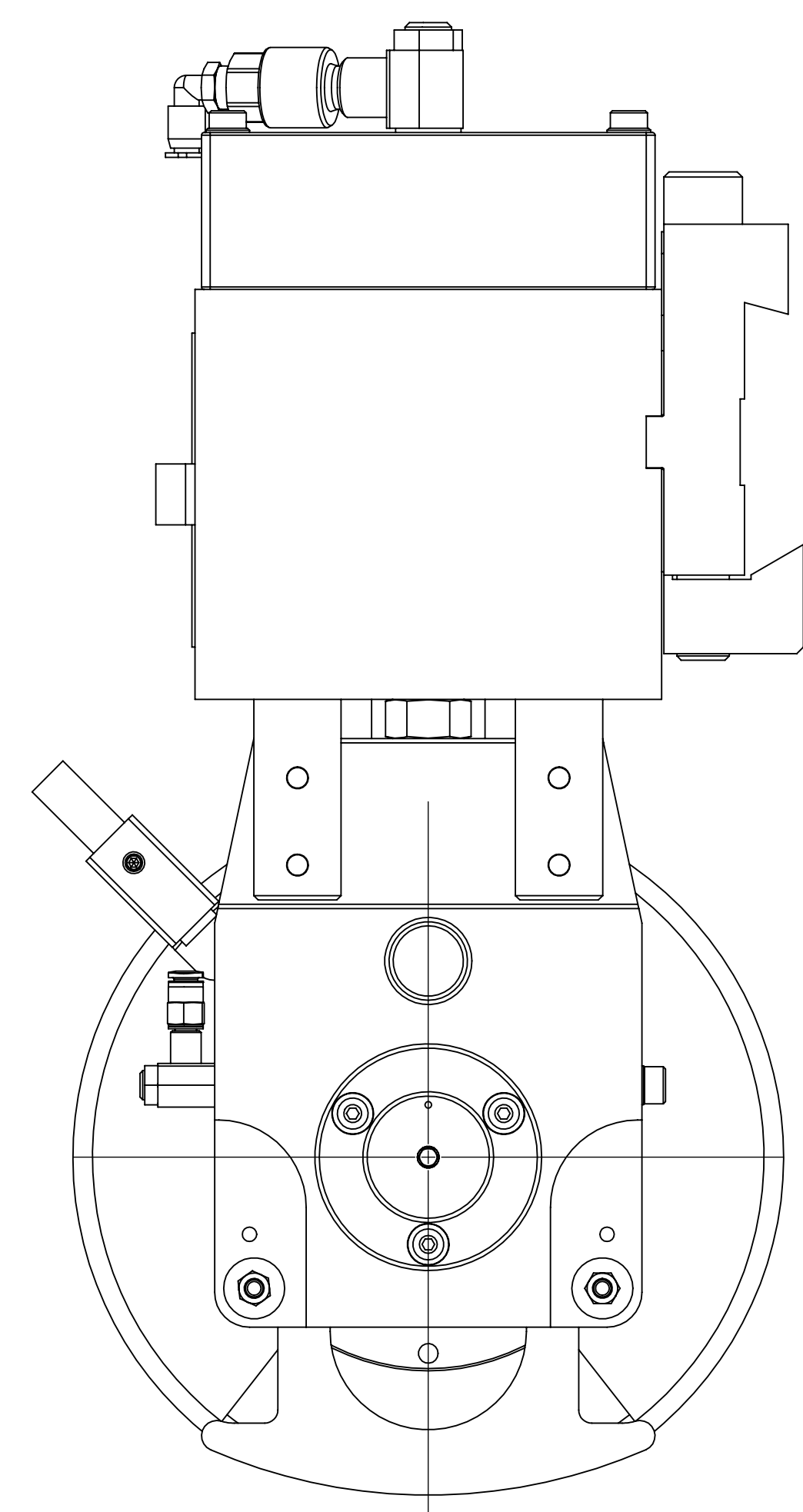
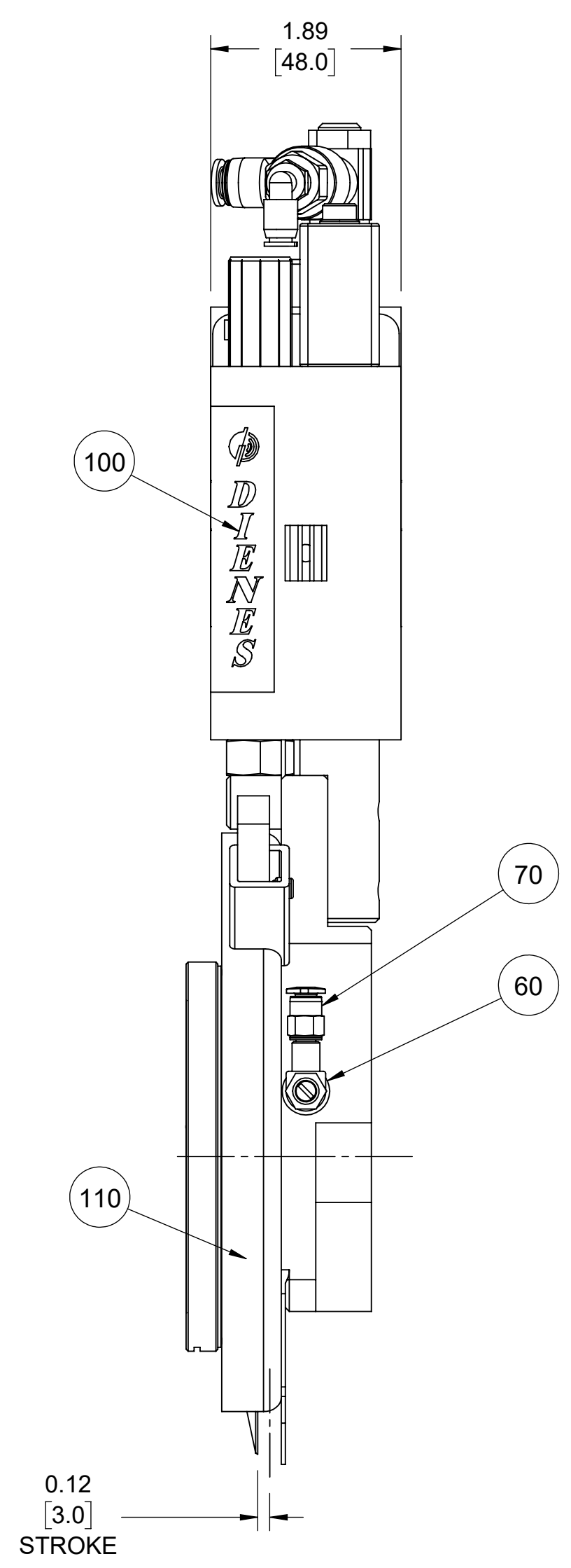
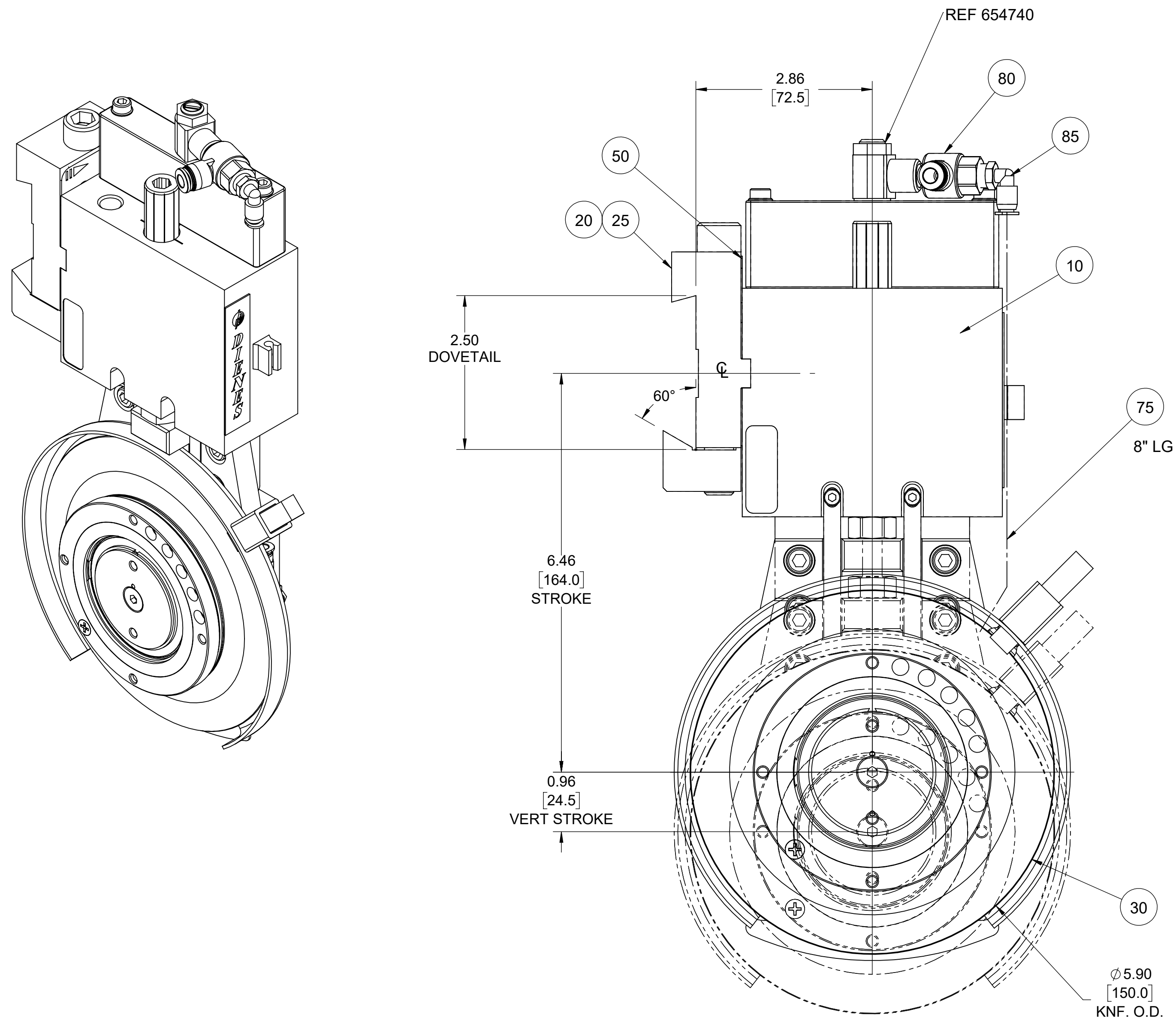
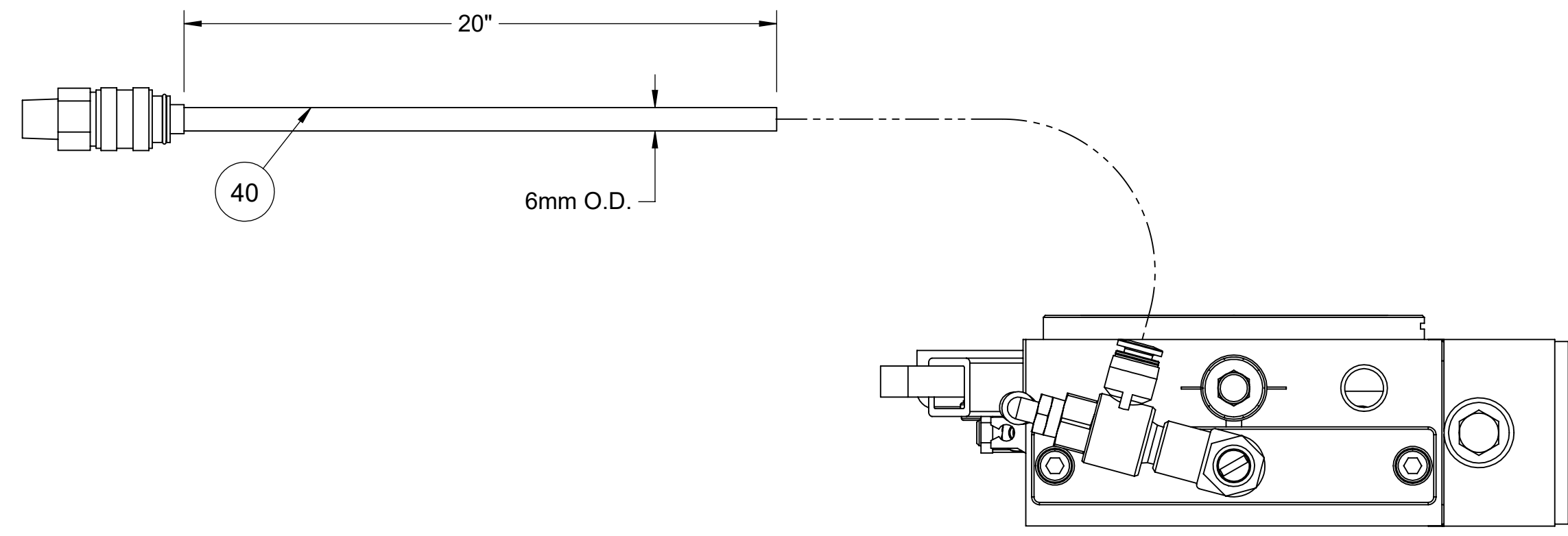


User Component Qty per Stk UM Description

0010	245AD68001001	1.00 EA	HLDR,DS50-150,LH (Z1-Z3)
0020	021551-0001	1.00 EA	ADPT,ASSY,DTL(SCR) PSG50/DF50
0025	613574	4.00 EA	SCR,CAP,SOC HD,M5X25 FS
0030	021563-1A	1.00 EA	KNF,DI,150X080X2.5,DB,P,D2
0040	418111	1.00 EA	HOSE ASSY,6MM TUBE-1/8NPT SOC
0050	021553-0002	1.00 EA	ANGLE PLATE 30'-PSG50
0060	650931	1.00 EA	VALVE,SUPPLY FLOW CONTROL M5
0070	651444	1.00 EA	CONN,STR,MINI,M5-4MM FS
0075	021714	0.25 M	TUBING,4MM ODX2.6MM ID-BLUE FS
0080	656790	1.00 EA	CONN,BRANCH,"T",R1/8-6MM FS
0085	650652	1.00 EA	CONN,EL,MINI,R1/8-4MM FS
0100	222637	1.00 EA	PLATE,NAME,DIENES LOGO FS
0110	411956	1.00 EA	DECAL,WARNING,"SHARP KNIFE"FS

REVISIONS			
REV.	ERN	DATE	CHCD BY
-	4174	08/19/2015	RELSD
A	4174-1	03/26/2018	BGB



- NOTES:**
1. MATERIAL: SEE BILL OF MATERIAL.
 2. THIS HOLDER IS STANDARD CONFIGURATION. (REF. SAME AS P3158-0001R, EXCEPT LH)
 3. USE FIXTURE TO ENSURE HOLDER IS ASSEMBLED SQUARE, IF APPLICABLE
 4. TEST HOLDER FOR STROKE & PNEUMATIC LEAKS.
 5. APPROX. WEIGHT: 11.21 LBS

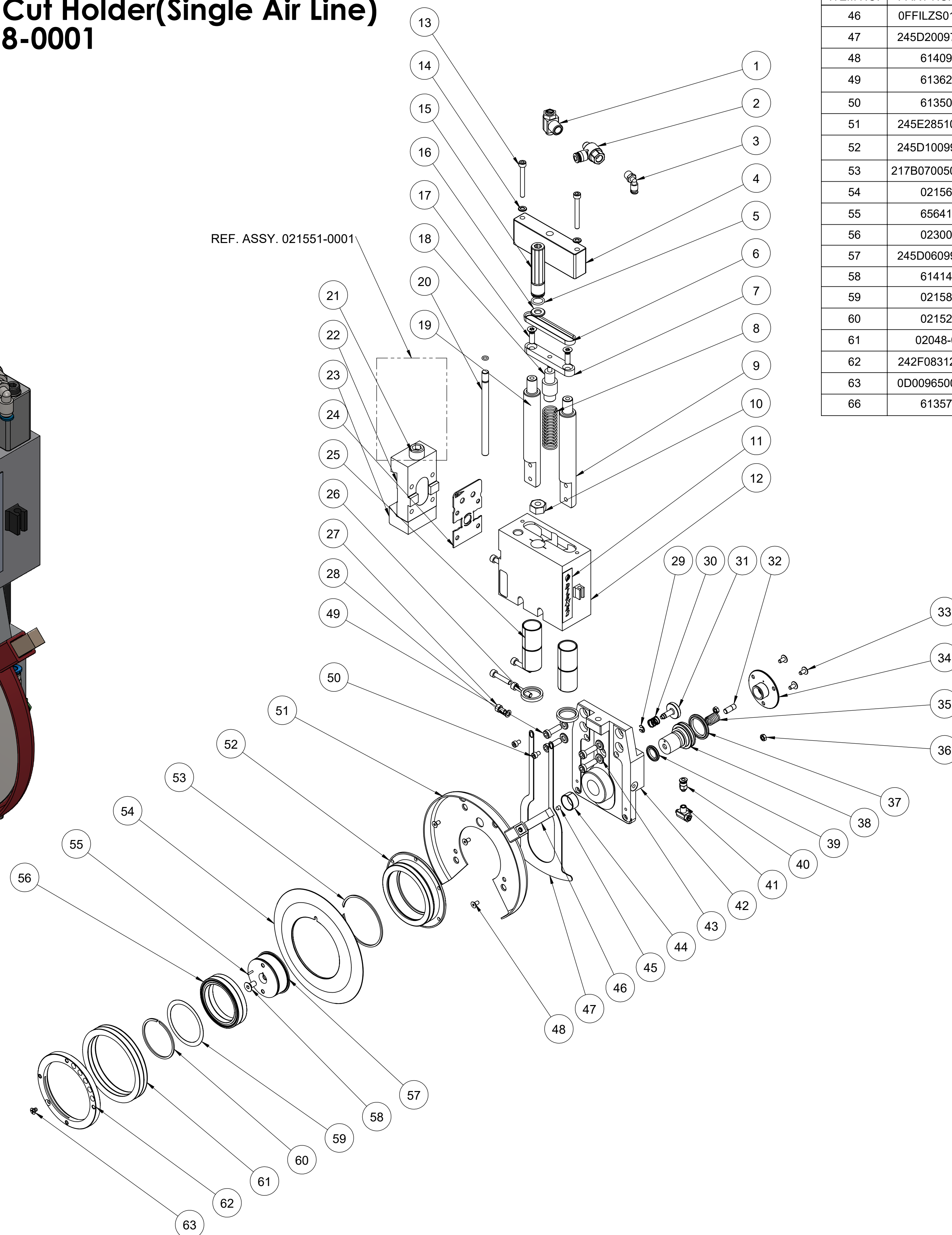
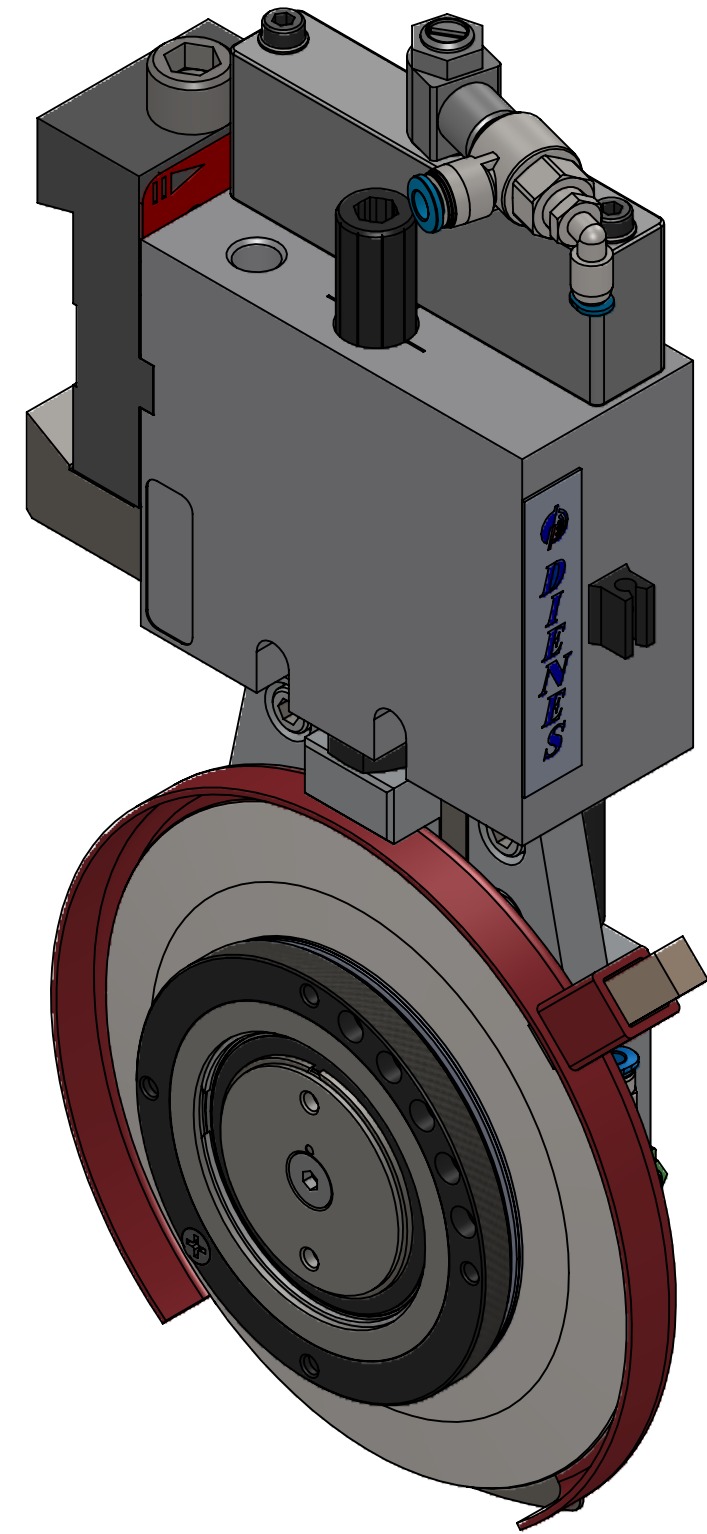
This document is the property of Dienes Corporation. It may contain proprietary information. DO NOT USE FOR PURPOSES OTHER THAN THOSE INTENDED.

 US PROJECTION		DIENES CORPORATION Spencer Massachusetts	
REFERENCE METRIC DATA		HLDR,DS50-150,LH,DVTSCR(Z1-Z3)	
DIM	TOL	Unless Otherwise Noted Dimensions Are In Inches	Drawn by: ARC
O.D.		Tolerances Unless Noted: XXX ±.005 XX ±.010 FRACT. ±.015	Date: 04/22/2021
I.D.		ANGLES ±1/2°	Checked by: AC
THK.		DO NOT SCALE DRAWING	Date: 09/25/2020
REF DWG: P3135-0001		Sheet 1 of 2	Scale: 3:4
		Drawing Number	Rev.
		DP3158-0001	A
		For Internal DIENES CORPORATION Use Only	

DS50-150 Shear Cut Holder(Single Air Line)

Dienes No. P3158-0001

REF. ASSY. 021551-0001



ITEM NO.	PART NUMBER	DESCRIPTION	QTY.
46	0FFILZS010002	WICK,FELT,8X10X50MM	1
47	245D200979010	GUARD,HAND,DS-50-150	1
48	614094	SCR,CAP,FL SOC HD,M4X8	4
49	613624	SCR,CAP,SOC HD,M6X20	4
50	613502	SCR,CAP,SOC HD,M4X6 FS	2
51	245E285101001	GUARD,HAND,DS50-150	1
52	245D100995010	CARRIER,KNF,DS50-150	1
53	217B070050010_1	RING,RETAINING, 67,3X62,7X1,5	1
54	021563	KNF,DI,150X080X2.5,DB,G,D2	1
55	656418	PIN,DOWEL,M2X8	1
56	023008	BRG,BALL,50x65x7	2
57	245D060994010	CARRIER,BRG,DS50-150	1
58	614142	SCR,CAP,FL SOC HD,M6X12	1
59	021583	WASH,60,5X50,1X0,3	1
60	021526	RING,RETAINING,EXT Ø52,4X1,5	1
61	02048-09	SPRG,DISHED 96X80X0,8	3
62	242F083121001	NUT,RING,98X80X8 PHLPS HD SCR	1
63	0D00965004003	SCR,MACH,FL HD,PHLPS,M4X6	1
66	613574	Scr,Cap,Soc Hd,M5x25	4

ITEM NO.	PART NUMBER	DESCRIPTION	QTY.
1	654740	VALVE SUPPLY,FLOW CONTROL,G1/8	1
2	656790	CONN,BRANCH,"T",R1/8-6MM	1
3	650652	CONN,EL,MINI,R1/8-4MM	1
4	022695	CYLINDER,PRESSURE	1
5	023629	O-RING R12-2 VITON	1
6	244B090176010	GASKET-DF30	1
7	243B080333010	PISTON,DS50-150	1
8	0FFEDER018002	SPRG,COMP,0.7X,4.33"LG	1
9	245C020964020	SHAFT,GUIDE,DS50	2
10	245C030967020	NUT,M8X1.0,SPECIAL	1
11	222637	NAME PLATE,NEW DIENES LOGO	1
12	245C110954020	HOUSINGBODY,DS50-150	1
13	613582	SCR,CAP,SOC HD,M5X45 FS	2
14	615722	WASH,PLAIN,M5	2
15	245C020956050	NUT,DEPTH ADJUSTMENT,DS50	1
16	0D00125008001	WASHER,DISC	1
17	022594	SCREW,COUNTERSUNK,M6X20	2
18	245C020966010	STUD,DEPTH ADJ.	1
19	022595	O-RING,8X5X1.5 Viton	1
20	245C010996010	SPINDLE ROD,THREADED	1
21	613816	SCR,CAP,SOC HD,M12X100	1
22	021886	PSG50 DOVETAIL ADAPTER	1
23	021496	CLAMPING PIECE	1
24	021553-0002	ANGLE PLATE 30'-PSG50	1
25	0FGLLAG020007	BUSHING, DU,20X23X30	4
26	651346	SEAL 26X20X4	2
27	613558	SCR,CAP,SOC HD,M5X8	1
28	651243	GASKET,FIBER, (M5)	1
29	022789	RING,RETAINING,EXT Ø6	1
30	022786	SPRINGSPRG,COMP,8.8,9.6X10.9MM	1
31	022787	PIN,LOCKING,DS50	1
32	653777	SCR,SET M6 X 16	1
33	023764	SCR,FLANGE HD,SOC,ULF M4X8	3
34	021938	COVER,OUTER,18X50X12.5	1
35	263D020117010	SPRG,PRESSURE 10.8x15 1.4310	1
36	615648	NUT,HEX,M4	2
37	021611	SEAL,PISTON,AIRZET,PK-32	1
38	0059800	AXLE,DS50-150	1
39	651562	SEAL,PISTON,AIRZET,PK-20	1
40	651444	CONN,STRAIGHT,MINI M5-4MM	1
41	650931	VALVE, SUPPLY FLOW CONTROL M5	1
42	245E140106010	HEAD,HOUSING,DS50-150	1
43	615724	WASH,PLAIN,M6	4
44	652327	BRG,PLAIN-18X20X10	1
45	615106	SCR,SET,CONE PT,M4X6	1

This document is the property of Dienes Corporation. It may contain proprietary information. DO NOT USE FOR PURPOSES OTHER THAN THOSE INTENDED.

 US PROJECTION		DIENES CORPORATION Spencer Massachusetts HLD, DS50-150, LH, DVTSCR(Z1-Z3)	
REFERENCE METRIC DATA		<small>Unless Otherwise Noted Dimensions Are In Inches</small> <small>Tolerances Unless Noted:</small> XXX ±.005 XX ±.010 XX FRACT. ±.015 ANGLE: ±1/2° <small>Finish Unless Noted: ✓</small> DO NOT SCALE DRAWING	
DIM	TOL	Drawn by:	ARC
O.D.		Date:	04/22/2021
I.D.		Checked by:	AC
THK.		Date:	09/25/2020
REF DWG:		Scale:	1:3
		Drawing Number	DP3158-0001
		Rev.	A
For Internal DIENES CORPORATION Use Only			