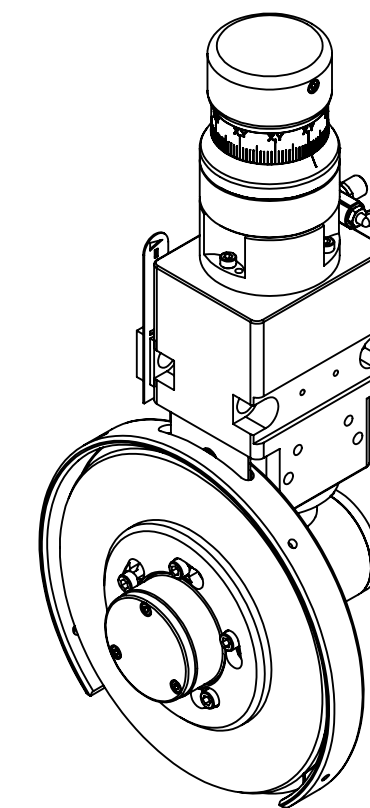
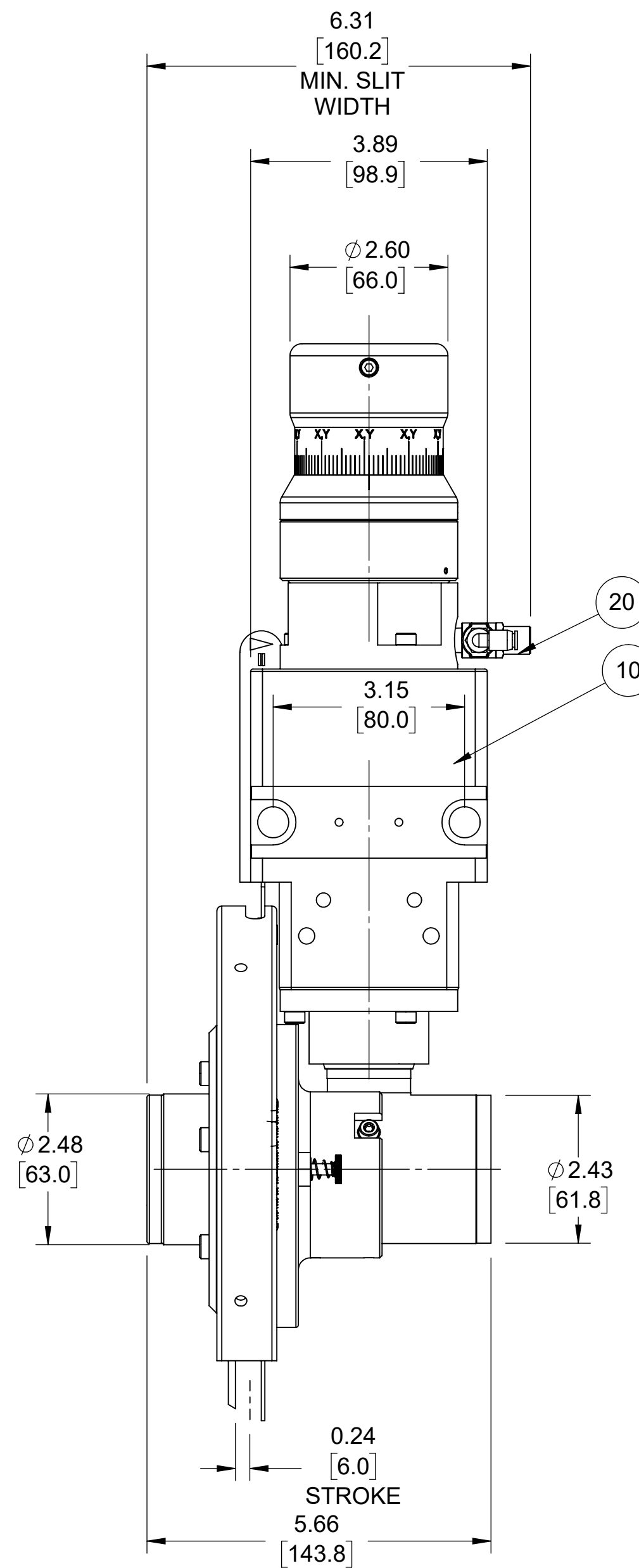
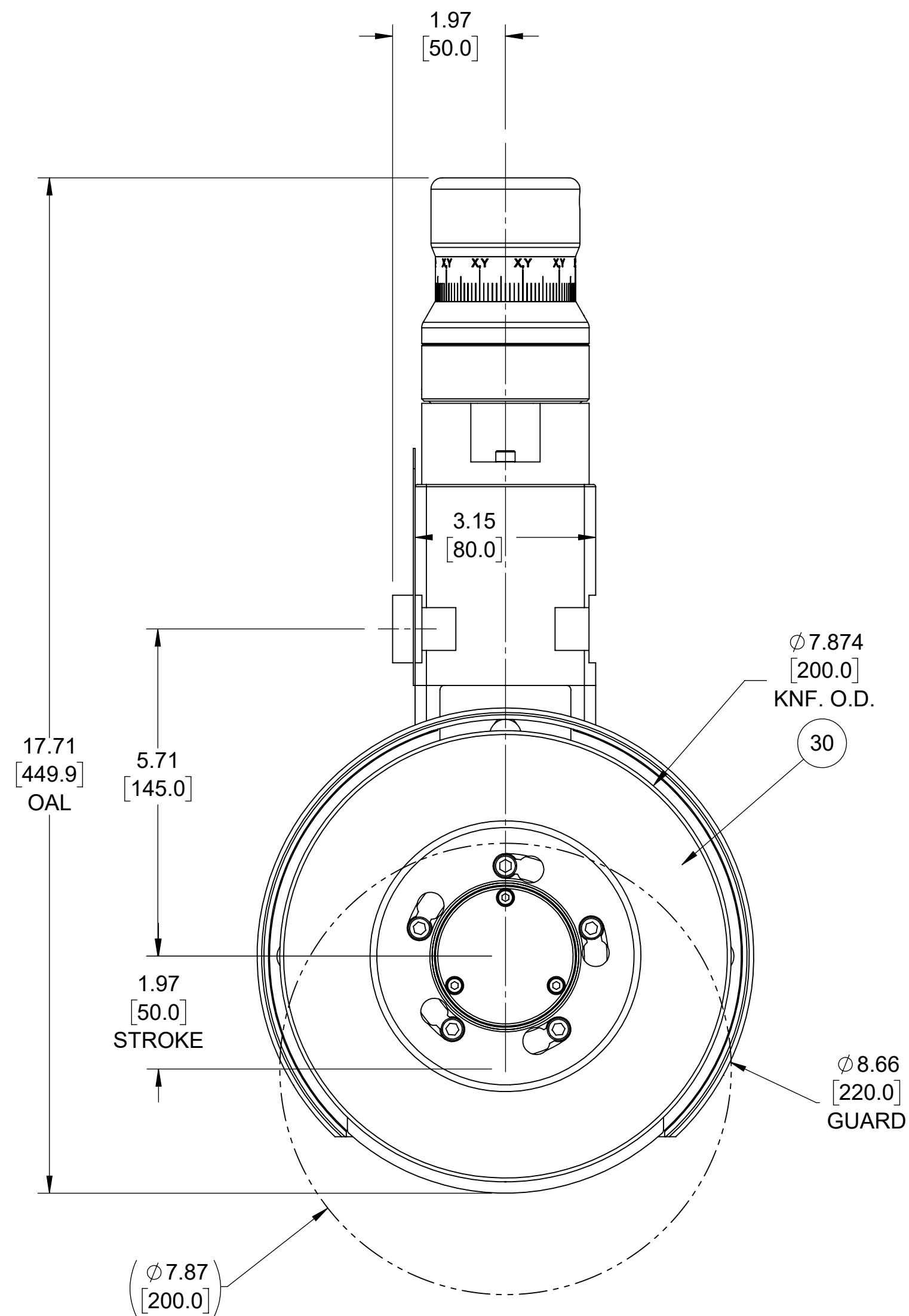


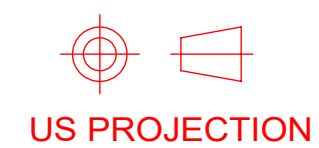
0010 245AC51B01001	1.00 EA	HLDR,DS8-200,SNGL,W/O MTG
0020 654740	1.00 EA	VALVE,SUPPLY FLOW CONTROL R1/8
0030 22837	1.00 EA	KNF,FL,DBR,D2,G,200X90X3.3

REVISIONS			
REV.	ERN	DATE	CHC'D BY
-	4189	2/25/16	RELSD



NOTES:

1. MATERIAL: SEE BILL OF MATERIAL.
2. THIS HOLDER IS STANDARD CONFIGURATION. (REF. SAME AS P3159-0001, EXCEPT HAND DIRECTION)
3. USE FIXTURE TO ENSURE HOLDER IS ASSEMBLED SQUARE, IF APPLICABLE
4. TEST HOLDER FOR STROKE & PNMEUMATIC LEAKS.
5. APPROX. WEIGHT: 25.47 LBS



US PROJECTION

REFERENCE METRIC DATA

DIM	TOL
O.D.	
I.D.	
THK.	
REF DWG:	245AC51B01001

DIENES CORPORATION
Spencer Massachusetts

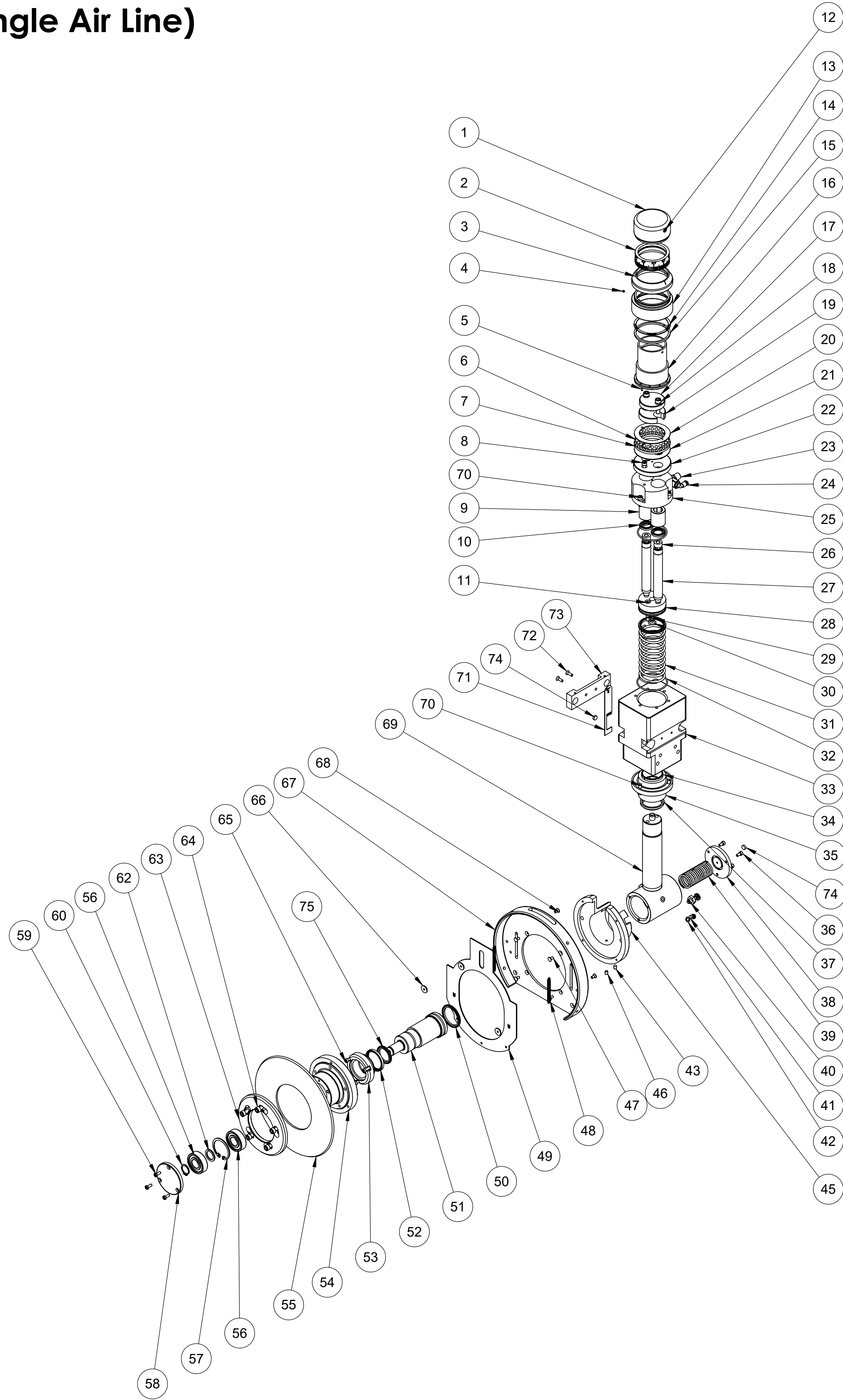
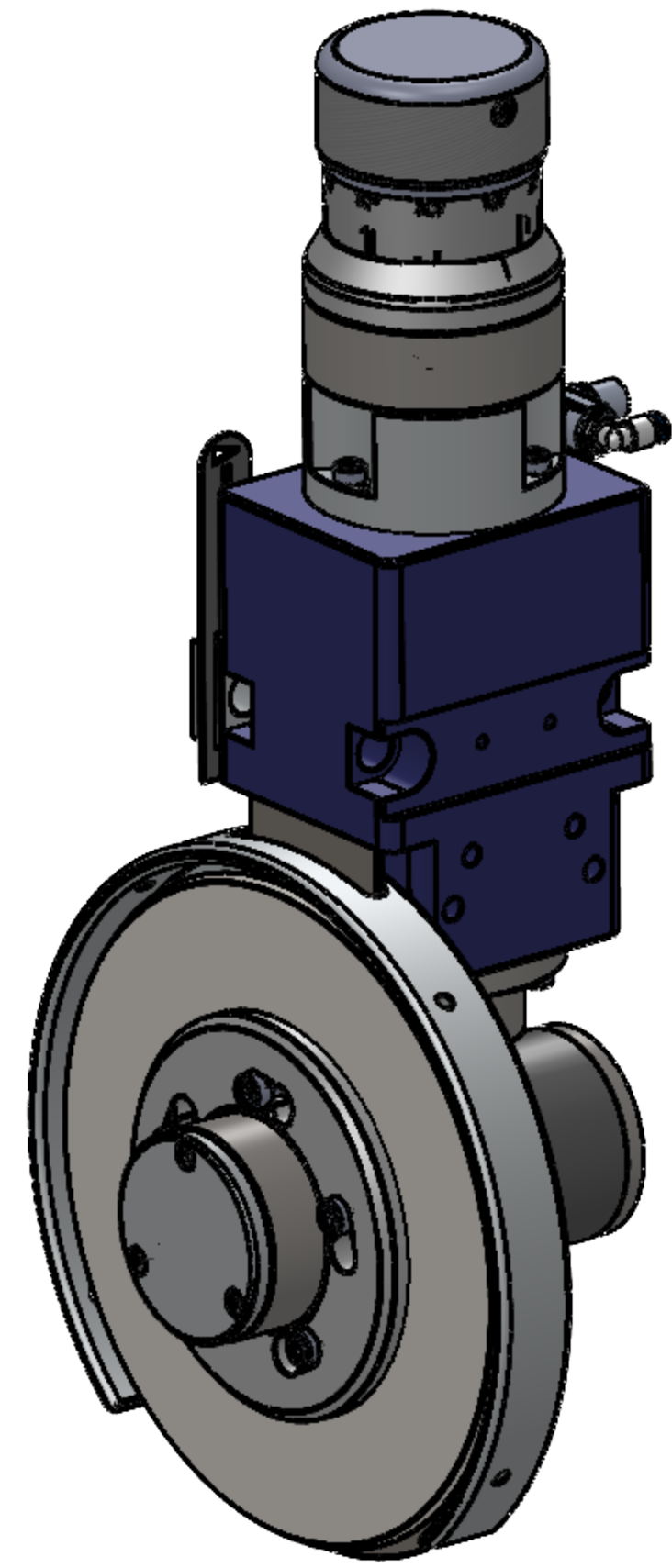
HLDR,DS8-200,LH,SNGL

Unless Otherwise Noted Dimensions Are In Inches	Drawn by:	ARC
Tolerances Unless Noted: .XXX ±.005 .XX ±.010 FRACT. ±.015 ANGLE ±1/2° Finish Unless Noted: ✓	Date:	2/25/2016
DO NOT SCALE DRAWING	Checked by:	AC
Sheet 1 of 2	Date:	2/25/2016
	Scale:	1:2
	Drawing Number	CP3159-0001
	Rev.	-

This document is the property of
Dienes Corporation
It may contain proprietary information
DO NOT USE FOR PURPOSES
OTHER THAN THOSE INTENDED

For Internal DIENES CORPORATION Use Only

DS8-200 Shear Cut Holder(Single Air Line) Dienes No. P3159-0001



ITEM NO.	PART NUMBER	DESCRIPTION	QTY.
1	245E066705010	HANDWHEEL, KNOB, Ø66MMX34.9MM	1
2	245E056701010	RING, SCALE, Ø62MMX19.9	1
3	245D080519010	RING, DUST, DEPTH KNOB	1
4	614610	SCR, SET, FL PT, M3X3 FS	2
5	651263	PIN, DOWEL, M2X6, ST STL	3
6	023277	BALL, STEEL, DF-145	24
7	245D070489010	CAGE, BRG, 48X65X4, DS8	1
8	613560-0100	SCR, CAP, SOC HD, M5X10	2
9	021620	BUSHING, LINEAR	2
10	022184	SEAL, ROD, AIRZET, PR-16	2
11	0107379005001	SHOULDER BOLT	2
12	617106	SCR, CAP, LO SOC HD, M4X6	1
13	245E075707010	RING, COVER, DS8	1
14	023278	RING	1
15	023135	RING, FELT, DUST KNOB	1
16	245E079020210	RING, M48X1, DS8	1
17	023165	STOPPER	1
18	613628	SCR, CAP, SOC HD, M6X25	2
19	245D050491010	PLATE	1
20	245D070490010	DISC PLATE	1
21	245D070488010	DISC PLATE	1
22	0059716	BASE PLATE	1
23	654740	VALVE, SUPPLY FLOW, R1/8M-G1/8F	1
24	650652	CONN, EL, MINI, R1/8-4MM FS	1
25	245C080903020	COVER, CYLINDER DF 150-200	1
26	234E000039200	DISC	2
27	021617	SHAFT, GUIDING	2
28	245E050448010	PISTON	1
29	022128	SCR, ORIFICE, M5X9, SPCL	1
30	022185	O-RING R10-2	1
31	653660	SPRG, COMP, 48X4X160MM	1
32	10051595	O-RING 52X2	1
33	245E140700040	BODY, HLD, DS8	1
34	653688	BUSHING, 35X39X20	2
35	0053453	SLEEVE BUSHING	1
36	613504	SCR, CAP, SOC HD, M4X8	3

ITEM NO.	PART NUMBER	DESCRIPTION	QTY.
37	021273	WIPER, DIRT - P5-35	1
38	245E065773010	COVER, CYLINDER	1
39	0FFEDER027002	SPRING	1
40	290A079002001	ASSY, PIN, LOCKING DS8-200	1
41	613558-0100	SCR, CAP, SOC HD, M5X8	2
42	0FPNZUB005003	GASKET, FIBER, (M5)	2
43	615134	SCR, SET, CONE PT, M5X6	
45	245C140627010	GUARD, KNIFE, 200MM	1
46	653661	SCR, SET, FL PT, M5X6	1
47	653759-0100	SCR, CAP, FL TORX HD, M4X8 S. S.	4
48	0FFEDER005006	SPRG, COMP, 5MMX 0.5 X 28.4MM LG	2
49	245E230772010	SHEET, HANDGUARD	1
50	022178	SEAL, PISTON, AIRZET, PK-45	1
51	021274	AXLE	1
52	0FWDICH035002	SEAL, PISTON, AIRZET 35X42X4	1
53	245B060679010	COVER, CYLINDER PSGDF	1
54	245E110779010	CARRIER, KNF, DS8	1
55	REFERENCE SHEAR KNF	(22837) 200X90X3,3	1
56	22509	BRG, BALL, 17X40X12	2
57	217B000052010	RING, RETAINING, INT Ø40X1,6	1
58	245B070182040	COVER, LID	1
59	617110-0100	SCR, CAP, LO SOC HD, M4X10 S. S.	3
60	22070	RING, RETAINING, EXT Ø17X1	1
62	021625	DISC, SEP	1
63	245D120646020	RETAINER, KNIFE DS8-200	1
64	613616-0100	SCR, CAP, SOC HD, M6X12 S. S.	5
65	613512-0100	SCR, CAP, SOC HD, M4X16 S. S.	3
66	245E014909010	SPACER	3
67	245E220771020	HAND GUARD 360°	1
68	614094-0100	SCR, CAP, FLSOC HD, M4X8 S. S.	3
69	245AB310001002	VERTICAL SHAFT	1
70	613566-0100	SCR, CAP, SOC HD, M5X16 S. S.	6
71	021828-00023	ANGLE, PLATE 30°-PSG1	1
72	614098-0100	SCR, CAP, FL SOC HD, M4X12 S. S.	2
73	245E100822010	KEY, ADAPTER	1
74	651760	SINTER FILTER SIKA 3300-723	2
75	02621	SEAL, PISTON, AIRZET, PK-35	1

This document is the property of Dienes Corporation. It may contain proprietary information. DO NOT USE FOR PURPOSES OTHER THAN THOSE INTENDED.

 US PROJECTION		DIENES CORPORATION Spencer Massachusetts HLD, DS8-200, LH, SNGL	
REFERENCE METRIC DATA		Unless Otherwise Noted Dims in Inches	Drawn by: BGB
DIM	TOL	Tolerances Unless Noted: XXX ±.005 XX ±.005 X ±.010 FRACT. ±.015 ANGLES ±1/2° English Unless Noted: <input checked="" type="checkbox"/> ¹⁶ / ₃₂	Date: 06/17/2022
O.D.		Checked by: BB	Date: 06/17/2022
I.D.		Scale: 1:2	Sheet 2 of 2
THK.		DO NOT SCALE DRAWING	Drawing Number: DP3159-0001
REF DWG:			Rev. -
		For Internal DIENES CORPORATION Use Only	