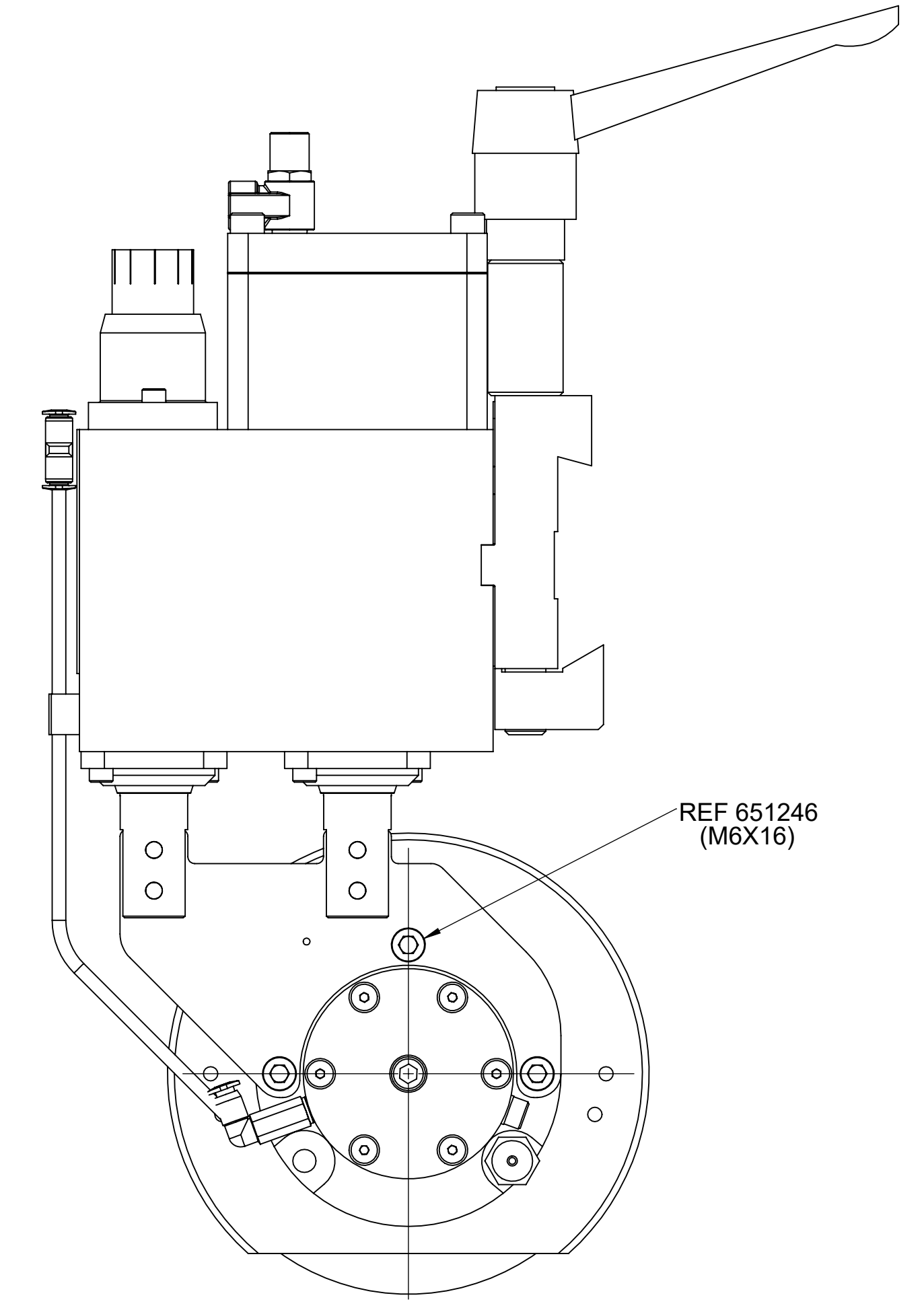
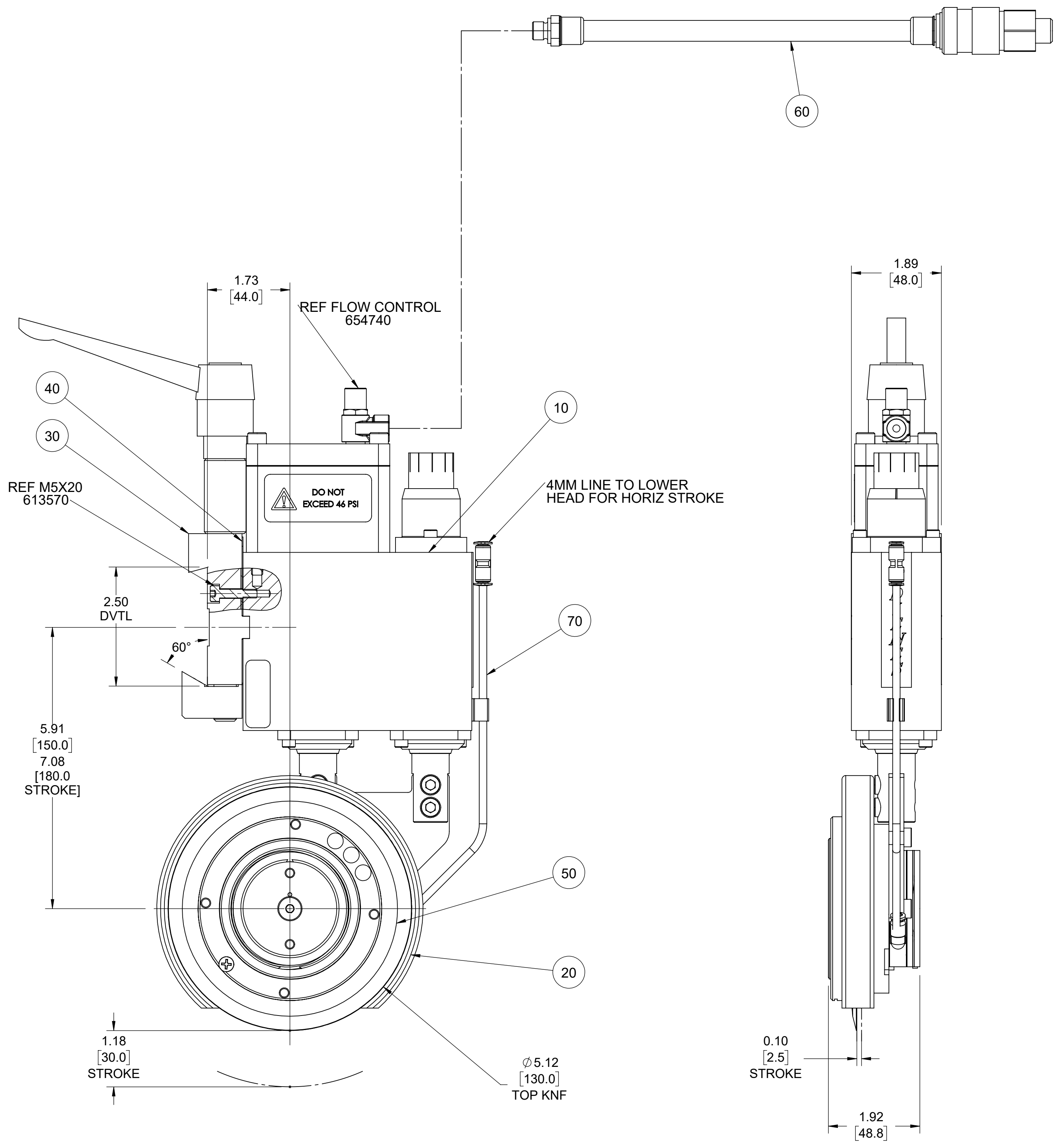
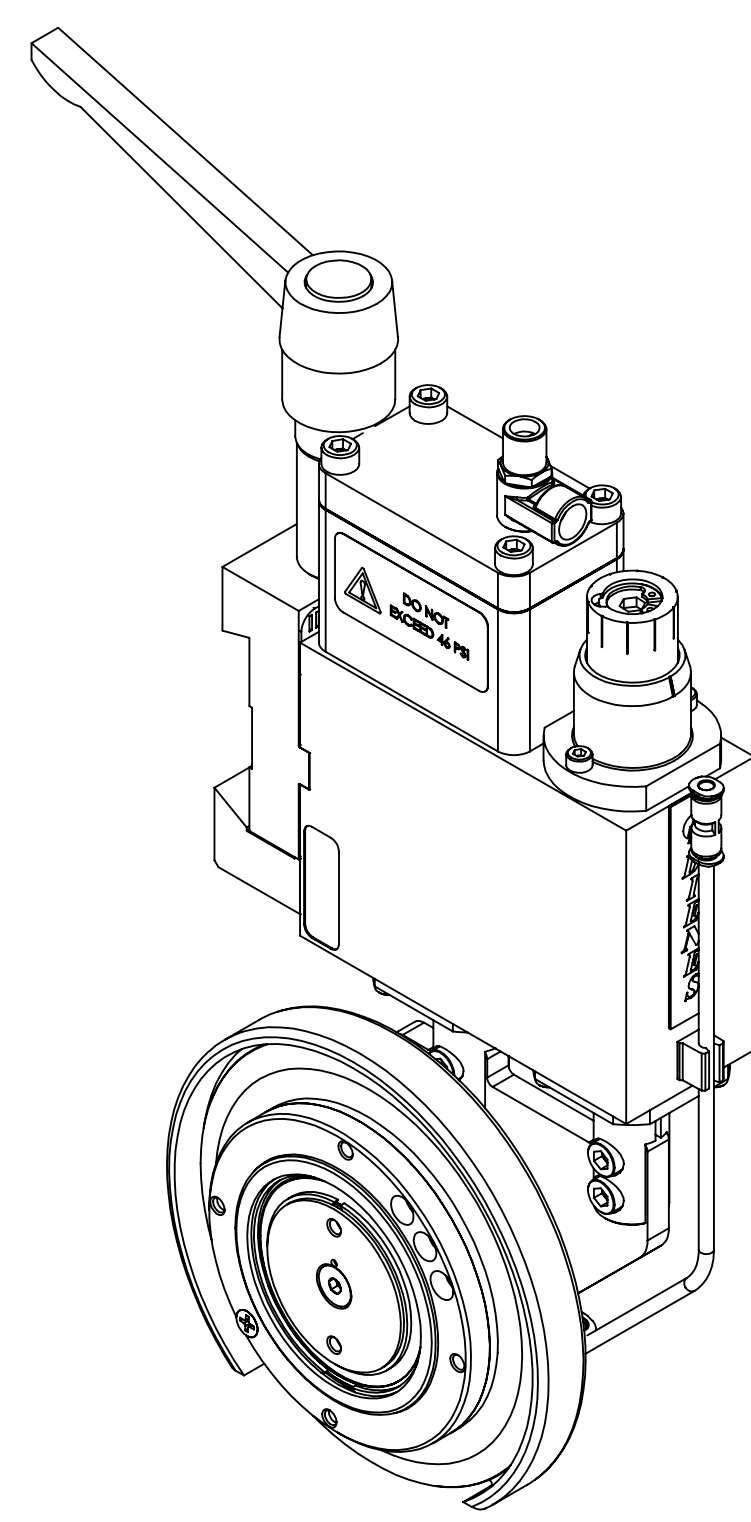


0010	411643	1.00	EA	BODY,HLDR,DF50/70-130/200(DUAL
0020	411645	1.00	EA	HEAD,KNIFE,DF50-130
0030	021551-0003	1.00	EA	ASSY,ADPT,DTL,(KIP HNDL)P3070
0040	021553-0002	1.00	EA	ANGLE PLATE 30'-PSG50
0050	02178	1.00	EA	KNF,DI,130X080X1.5,DB,G,D2
0060	02134-09	1.00	EA	HOSE,AIR,TYPE 2 - 16" W/CPLR
0070	410811	1.00	EA	AIR SUPPLY,DUAL

REVISIONS			
REV.	ERN	DATE	CHK'D BY
-	-	8/15/07	RELSD
A	4499	6/24/2022	BGB



NOTES:

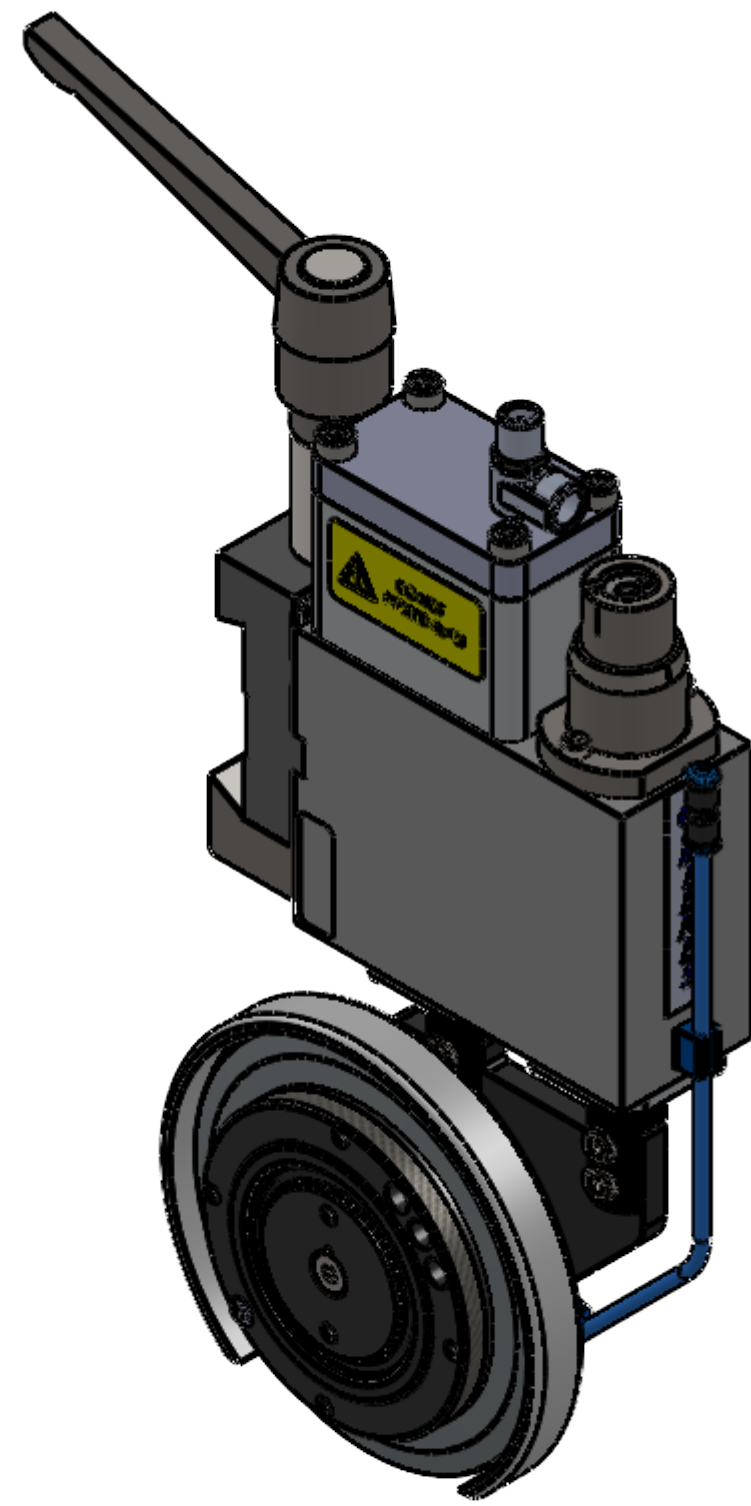
1. MATERIAL: SEE BILL OF MATERIAL.
2. THIS HOLDER IS STANDARD CONFIGURATION.
3. USE FIXTURE TO ENSURE HOLDER IS ASSEMBLED SQUARE, IF APPLICABLE.
4. TEST HOLDER FOR STROKE & PNEUMATIC LEAKS.
5. APPROX. WEIGHT: 16.05 LBS

(A) CREATED MODEL, DRAWING & PDF FROM SOLIDWORKS

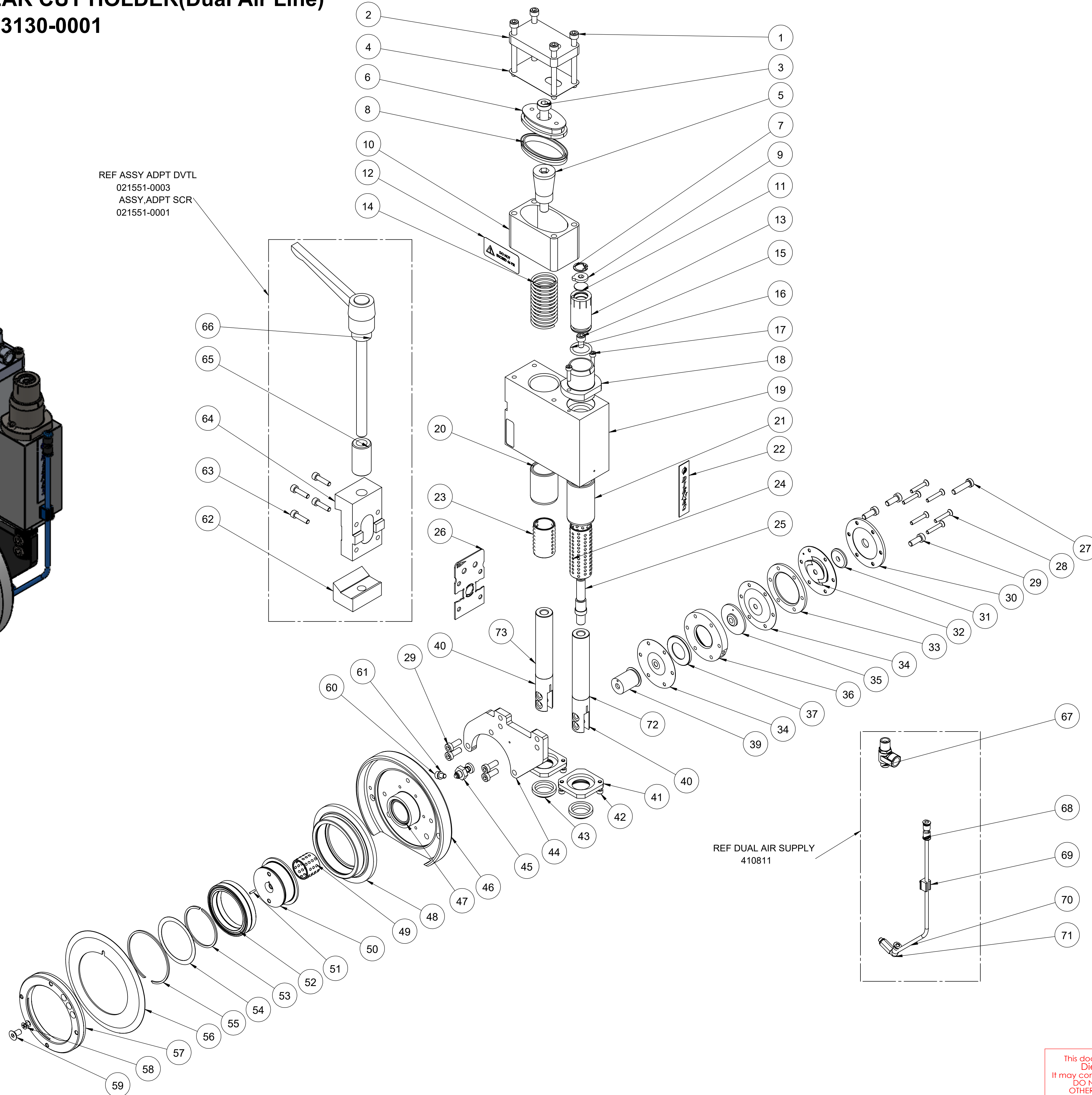
This document is the property of Dienes Corporation. It may contain proprietary information. DO NOT USE FOR PURPOSES OTHER THAN THOSE INTENDED.

<p>US PROJECTION</p>		<p>DIENES CORPORATION Spencer Massachusetts</p> <p>HLDR,DF50-130,STD,DVT,KIP</p>	
REFERENCE METRIC DATA		Unless Otherwise Noted Dims in Inches	Drawn by: BGB
DIM	TOL	Tolerances Unless Noted: XXX ±.005 XX ±.005 X ±.010 FRACT. ±.015 ANGLES ±1/2° English Unless Noted: <input checked="" type="checkbox"/> $\frac{1}{16}$ " DO NOT SCALE DRAWING	Date: 06/24/2022
O.D.			Checked by: BB
I.D.			Date: 06/24/2022
THK.			Scale: 2:3
REF DWG: P3135-0001		Sheet 1 of 2	Drawing Number: DP3130-0001
			Rev. A
<p>For Internal DIENES CORPORATION Use Only</p>			

DF50-130 SHEAR CUT HOLDER(Dual Air Line) DIENES NO. P3130-0001



REF ASSY ADPT DVTL
021551-0003
ASSY,ADPT SCR
021551-0001

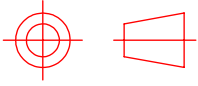


REF DUAL AIR SUPPLY
410811

PLEASE NOTE:
ITEMS 72 & 73 GUIDE SHAFTS
ARE ONE PIECE CONSTRUCTION

ITEM NO.	PART NUMBER	DESCRIPTION	QTY.
1	613646	SCR,CAP,SOC HD,M6X70	4
2	245C080525010	COVER,CYLINDER,DF50	1
3	617340	SCR,CAP,LO SOC HD,M10X25	1
4	245C080528010	GASKET,76.5X44.5X.35	1
5	234B030205010	SCREW,GUIDE SHAFT	1
6	650770	PISTON	1
7	022129	RING,RETAINING,INT Ø16MMX1	1
8	022725	RING,SEAL,66X56X38X28X7	1
9	234E020061010	WASHER,NOSE,Ø16X3 THK	1
10	245D137A01001	CYLINDER	1
11	234E030036030	DISC,16X1	1
12	021757	DECAL,WARNING '46 PSF'	1
13	245C030530010	NUT,DF50 UPPER BODY	1
14	650775	SPRNG,COMP,31MMX2.5WIRE,103LG	1
15	613614	SCR,CAP,SOC HD,M6X10	1
16	650779	O-RING R19,2X3 VITON	1
17	613512	SCR,CAP,SOC HD,M4X16	2
18	245C050533010	CAP,PROTECTIVE	1
19	245C130529010	BODY,HLDR DF50	1
20	650771	BRG,BUSHING,STEEL,26X32X42	1
21	650772	BRG,BUSHING,STEEL,26X32X56	1
22	222637	NAME PLATE,NEW DIENES LOGO	1
23	650773	CAGE,BRG,BRS,20X26X40	1
24	650774	CAGE,BRG,BRS,20X26X88	1
25	234B020204010	PIN,THREADED M10X63 LG	2
26	021553-0002	ANGLE PLATE 30°	1
27	651250	SCR,CAP,LO SOC HD,M6X25 ZN	1
28	614104	SCR,CAP,FL SOC HD,M4X25	6
29	651246	SCR,CAP,LO SOC HD,M6X16 ZN	7
30	245C070540010	COVER,OUTER,62X11X3	1
31	245C030548010	PLATE,INTERMEDIATE	1
32	263C070034010	SPRING,CIRCULAR,62X6,1X0,8	1
33	245C070541010	COVER,INNER,62X40X3	1
34	022137	DIAPHRAGM, DF HEAD	2
35	245C040547030	PLATE,INTERMEDIATE,STEPPEED	1
36	245C070539010	RING,INTERMEDIATE,62X27X9	1
37	245D040249010	STOP END	1
39	245C030546090	AXLE,HEAD,DF50	1
40	245C020534010	GUIDE,SHAFT,Ø20MM	2
41	021637	SLEEVE,RETAINING	2
42	613508	SCR,CAP,SOC HD,M4X12	4
43	650780	WIPER,DIRT	2
44	245C130531010	PLATE,DF50-130	1
45	290A079001001	ASSY,PIN,LOCKING DF50, PSG50	1
46	245D252401001	ASSY,HOUSING,GUARD,DF50-130	1
47	022597	BUSHING,GUIDE,26X32X29.5	1
48	245C100535020	KNIFE,CARRIER,DF50-130	1
49	651242	CAGE,BRG,BRS,20X26X22MM LG	1
50	245C060537010	CARRIER,BRG,DF50	1
51	651241	PIN,GROOVED,M2X8	1
52	023008	BRG,BALL,50X65X7	2
53	021526	RING,RETAINING,EXT Ø52,4X1.5	1
54	021583	WASH,60,5X50,1X0.3	1
55	021525	RING,RETAINING,INT Ø67,3X1.5	1
56	22057	KNF,DI,130X80X1.5,DB,G,52	1
57	021638	NUT,RING M75X1.5 DF50	1
58	0D00965004003	SCR,MACH,FL HD,PHLPS,M4X6	1
59	651240	SCR,CAP,FL SOC HD,M6X12-ZN	1
60	613558	SCR,CAP,SOC HD,M5X8	1
61	651243	GASKET,FIBER(M5)	1
62	021496	CLAMPING PIECE	1
63	613570	SCR,CAP,SOC HD,M5X20	4
64	021886	ADPT,DOVETAIL,PSG&DF	1
65	021668	HANDLE,SPACER,40MM LG	1
66	021499	HAND,LEVER,M12(65MM)X140 KIP	1
67	654740	VALVE,SUPPLY FLOW,R18M-G1/8F	1
68	650320	CONNECTOR, MINI, 4MM-4MM FS	1
69	021741	TUBE,HLDR-4mm	1
70	021714	TUBING,4MM OD X2.6MM ID-BLUE	1
71	021713	CONN,EL LG M5-4MM	1
72	245E020094010	GUIDE,SHAFT,Ø20MMX182MM (REPLACES ITEM 40 & 25)	1
73	245E030093010	GUIDE,SHAFT,Ø20MM X174MM (REPLACES ITEM 40 & 5)	1

This document is the property of
Dienes Corporation
It may contain proprietary information
DO NOT USE FOR PURPOSES
OTHER THAN THOSE INTENDED

 US PROJECTION		DIENES CORPORATION <i>Spencer Massachusetts</i> HLDR,DF50-130,STD,DVT,KIP	
REFERENCE METRIC DATA		Unless Otherwise Noted Dims in Inches	Drawn by: BGB
DIM		Tolerances Unless Noted: XXX ±.005 XX ±.015 X ±.030 FRACT. ±.010 ANGLES ±1/2° English Unless Noted: <input checked="" type="checkbox"/> DO NOT SCALE DRAWING	Date: 06/24/2022
TOL		Scale: 2:3	Checked by: BB
O.D.		Drawing Number	Date: 06/24/2022
I.D.		DP3130-0001	Scale: 2:3
THK.		Sheet 2 of 2	Rev. A
REF DWG:		For Internal DIENES CORPORATION Use Only	