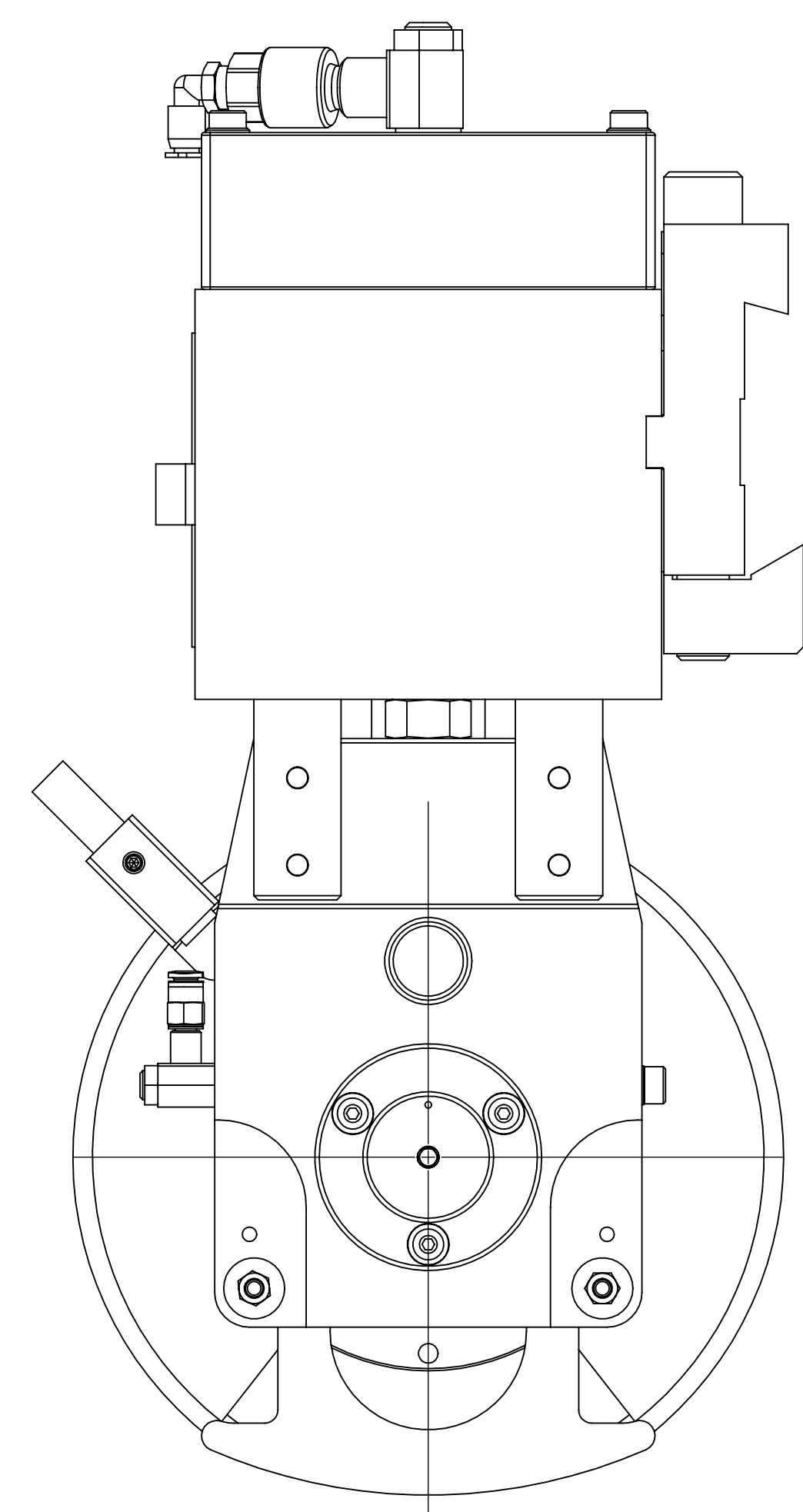
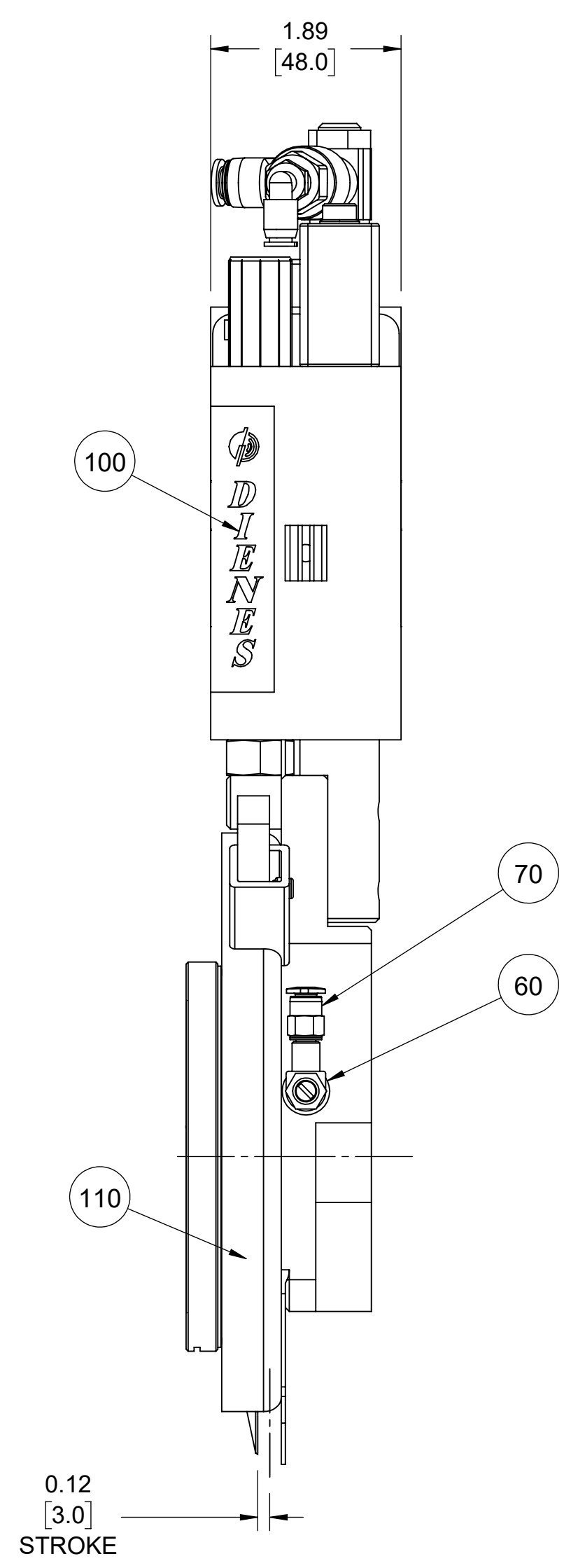
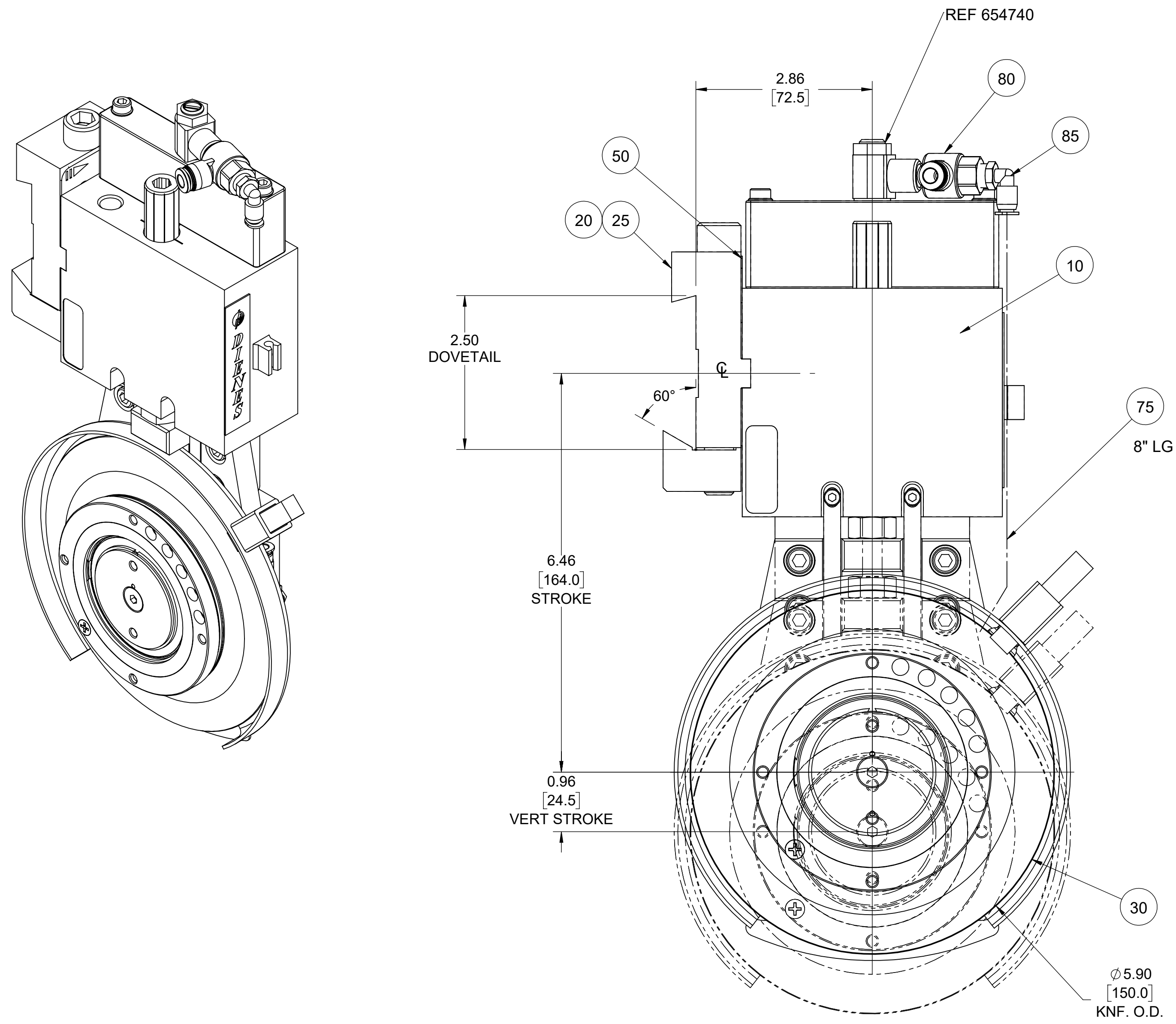
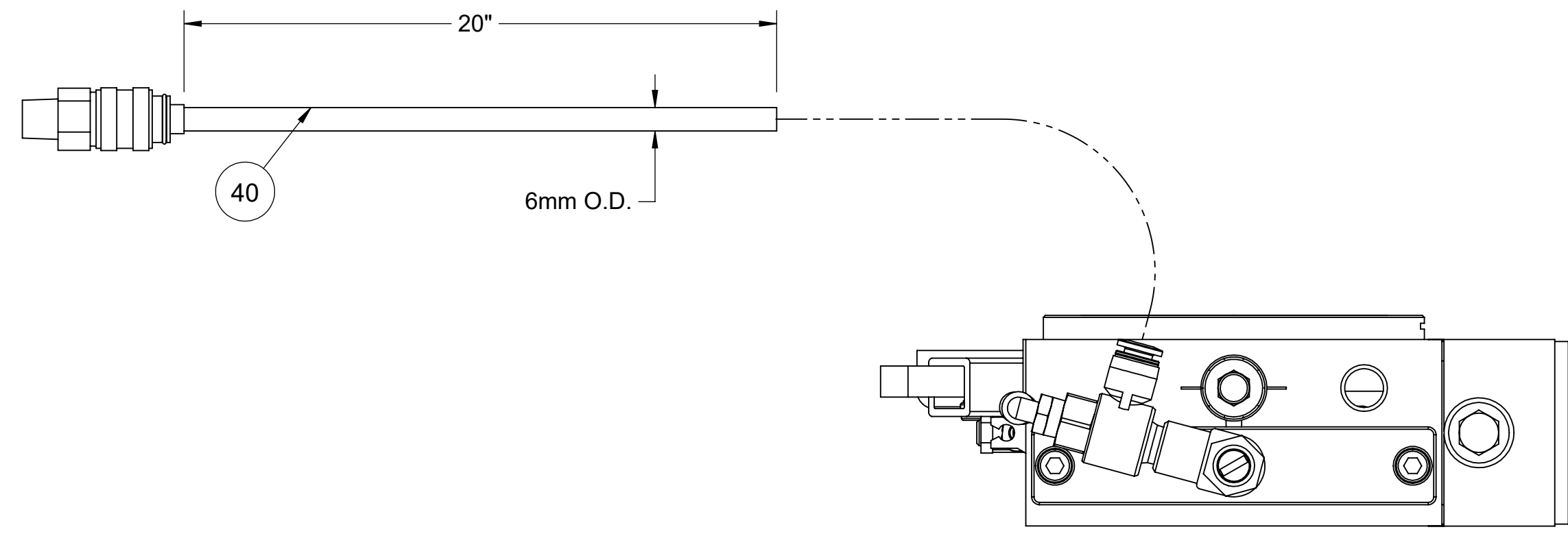


User Component Qty per Stk UM Description

0010	245AD68001001	1.00 EA	HLDR,DS50-150,LH (Z1-Z3)
0020	021551-0001	1.00 EA	ADPT,ASSY,DTL(SCR) PSG50/DF50
0025	613574	4.00 EA	SCR,CAP,SOC HD,M5X25 FS
0030	021563-1A	1.00 EA	KNF,DI,150X080X2.5,DB,P,D2
0040	418111	1.00 EA	HOSE ASSY,6MM TUBE-1/8NPT SOC
0050	021553-0002	1.00 EA	ANGLE PLATE 30'-PSG50
0060	650931	1.00 EA	VALVE,SUPPLY FLOW CONTROL M5
0070	651444	1.00 EA	CONN,STR,MINI,M5-4MM FS
0075	021714	0.25 M	TUBING,4MM ODX2.6MM ID-BLUE FS
0080	656790	1.00 EA	CONN,BRANCH,"T",R1/8-6MM FS
0085	650652	1.00 EA	CONN,EL,MINI,R1/8-4MM FS
0100	222637	1.00 EA	PLATE,NAME,DIENES LOGO FS
0110	411956	1.00 EA	DECAL,WARNING,"SHARP KNIFE"FS

REVISIONS			
REV.	ERN	DATE	CHC'D BY
-	4174	08/19/2015	RELSD
A	4174-1	03/26/2018	BGB



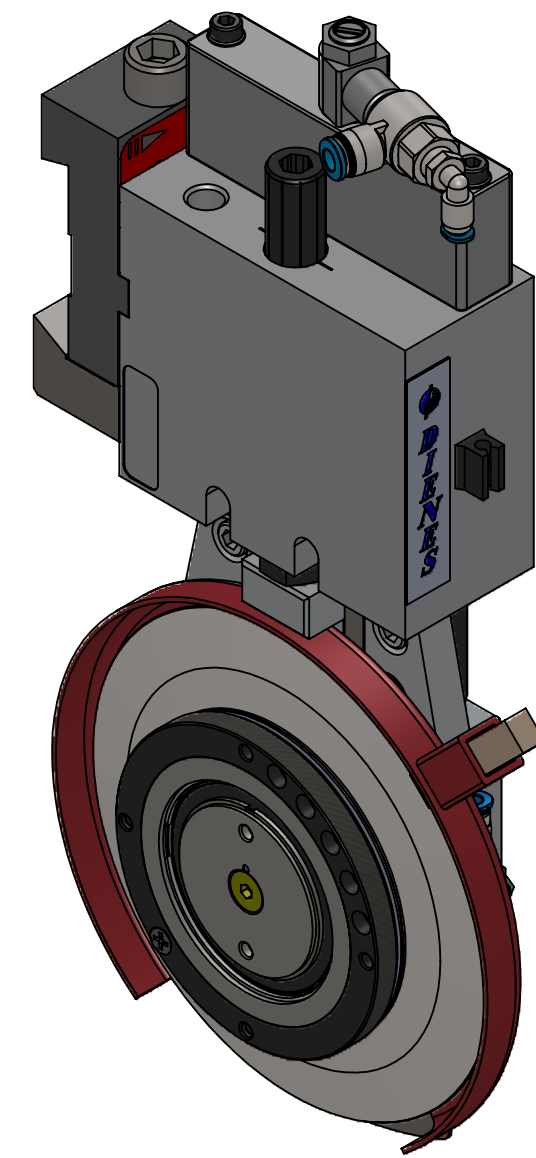
- NOTES:**
1. MATERIAL: SEE BILL OF MATERIAL.
 2. THIS HOLDER IS STANDARD CONFIGURATION. (REF. SAME AS P3158-0001R, EXCEPT LH)
 3. USE FIXTURE TO ENSURE HOLDER IS ASSEMBLED SQUARE, IF APPLICABLE
 4. TEST HOLDER FOR STROKE & PNEUMATIC LEAKS.
 5. APPROX. WEIGHT: 11.21 LBS

This document is the property of Dienes Corporation. It may contain proprietary information. DO NOT USE FOR PURPOSES OTHER THAN THOSE INTENDED.

<p>US PROJECTION</p>		<p>DIENES CORPORATION Spencer Massachusetts</p>	
		<p>HLDR,DS50-150,LH,DVTSCR(Z1-Z3)</p>	
REFERENCE METRIC DATA		Unless Otherwise Noted Dimensions Are In Inches Tolerances Unless Noted: XXX ±.005 XX ±.010 FRACT. ±.015 ANGLES ±1/2° Finish Unless Noted: ✓ DO NOT SCALE DRAWING	
DIM	TOL	Drawn by:	ARC
O.D.		Date:	04/22/2021
I.D.		Checked by:	AC
THK.		Date:	09/25/2020
REF DWG: P3135-0001		Scale:	3:4
		Drawing Number	DP3158-0001
		Rev.	A
<p><i>For Internal DIENES CORPORATION Use Only</i></p>			

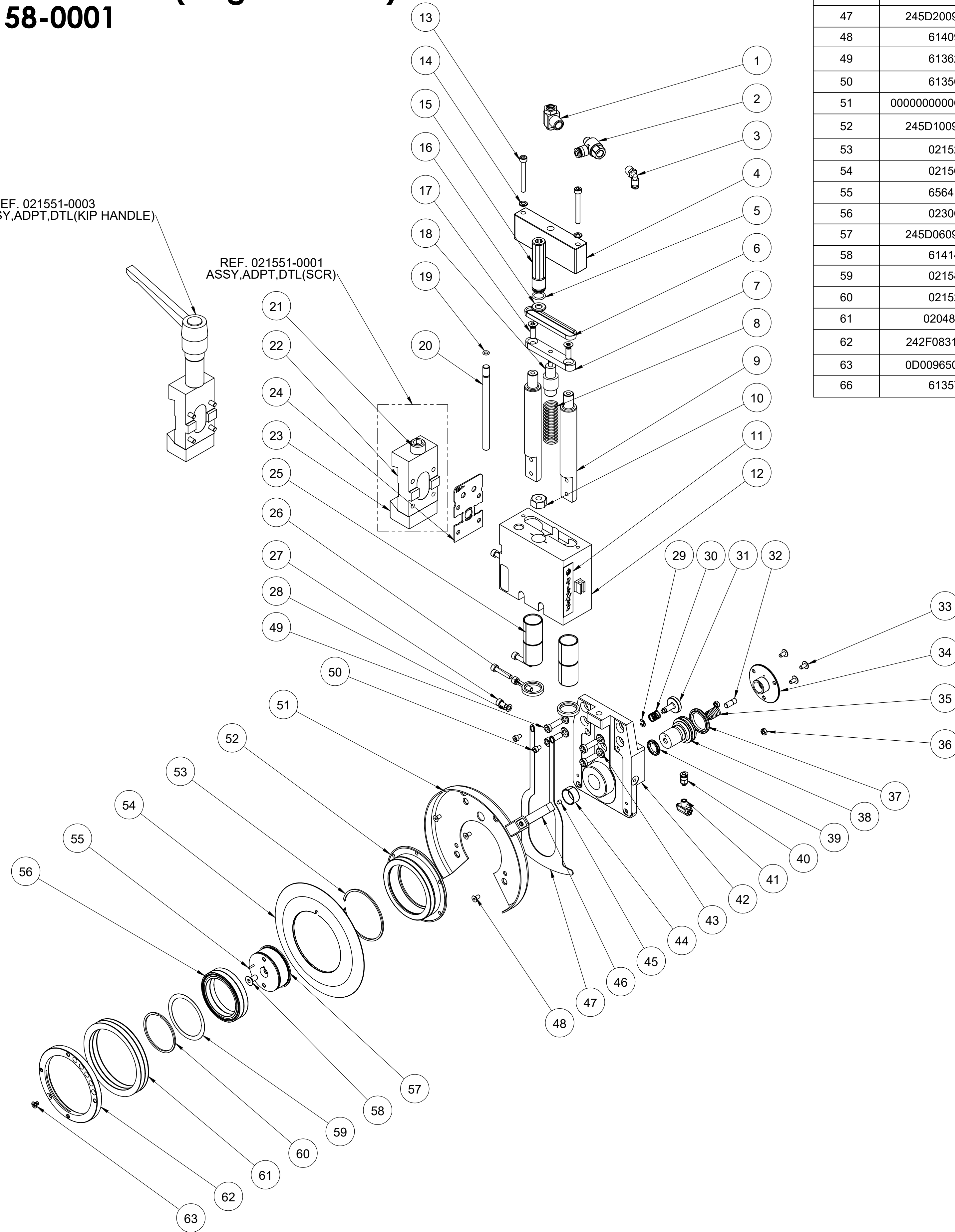
DS50-150 Shear Cut Holder(Single Air Line)

Dienes No. P3158-0001



REF. 021551-0003
ASSY,ADPT,DTL(KIP HANDLE)

REF. 021551-0001
ASSY,ADPT,DTL(SCR)



ITEM NO.	PART NUMBER	DESCRIPTION	QTY.
46	0FFILZS010002	WICK,FELT,8X10X50MM	1
47	245D200979010	GUARD,HAND,DS-50-150	1
48	614094	SCR,CAP,FL SOC HD,M4X8	4
49	613624	SCR,CAP,SOC HD,M6X20	4
50	613502	SCR,CAP,SOC HD,M4X6 FS	2
51	000000000008491_1	GUARD,HAND,DS50-150	1
52	245D100995010	CARRIER,KNF,DS50-150	1
53	021525	RING,RETAINING,INT Ø67,3X1,5	1
54	021563	KNF,DI,150X080X2,5,DB,G,D2	1
55	656418	PIN,DOWEL,M2X8	1
56	023008	BRG,BALL,50x65x7	2
57	245D060994010	CARRIER,BRG,DS50-150	1
58	614142	SCR,CAP,FL SOC HD,M6X12	1
59	021583	WASH,60,5X50,1X0,3	1
60	021526	RING,RETAINING,EXT Ø52,4X1,5	1
61	02048-09	SPRG,DISHED 96X80X0,8	3
62	242F083121001	NUT,RING,98X80X8 PHLPS HD SCR	1
63	0D00965004003	SCR,MACH,FL HD,PHLPS,M4X6	1
66	613574	Scr,Cap,Soc Hd,M5x25	4

ITEM NO.	PART NUMBER	DESCRIPTION	QTY.
1	654740	VALVE SUPPLY,FLOW CONTROL,G1/8	1
2	656790	CONN,BRANCH,"T",R1/8-6MM	1
3	650652	CONN,EL,MINI,R1/8-4MM	1
4	022695	CYLINDER,PRESSURE	1
5	023629	O-RING R12-2 VITON	1
6	244B090176010	GASKET-DF30	1
7	243B080333010	PISTON,DS50-150	1
8	0FFEDER018002	SPRG,COMP,0.7X,4.33"LG	1
9	245C020964020	SHAFT,GUIDE,DS50	2
10	245C030967020	NUT,M8X1.0,SPECIAL	1
11	222637	NAME PLATE,NEW DIENES LOGO	1
12	245C110954020	HOUSINGBODY,DS50-150	1
13	613582	SCR,CAP,SOC HD,M5X45 FS	2
14	615722	WASH,PLAIN,M5	2
15	245C020956050	NUT,DEPTH ADJUSTMENT,DS50	1
16	0D00125008001	WASHER,DISC	1
17	022594	SCREW,COUNTERSUNK,M6X20	2
18	245C020966010	STUD,DEPTH ADJ.	1
19	022595	O-RING,8X5X1.5 Viton	1
20	245C010996010	SPINDLE ROD,THREADED	1
21	613816	SCR,CAP,SOC HD,M12X100	1
22	021886	PSG50 DOVETAIL ADAPTER	1
23	021496	CLAMPING PIECE	1
24	021553-0002	ANGLE PLATE 30'-PSG50	1
25	0FGLLAG020007	BUSHING, DU,20X23X30	4
26	651346	SEAL 26X20X4	2
27	613558	SCR,CAP,SOC HD,M5X8	1
28	651243	GASKET,FIBER, (M5)	1
29	022789	RING,RETAINING,EXT Ø6	1
30	022786	SPRINGSPRG,COMP,8,8,9.6X10.9MM	1
31	022787	PIN,LOCKING,DS50	1
32	653777	SCR,SET M6 X 16	1
33	023764	SCR,FLANGE HD,SOC,ULF M4X8	3
34	021938	COVER,OUTER,18X50X12.5	1
35	263D020117010	SPRG,PRESSURE 10.8x15 1.4310	1
36	615648	NUT,HEX,M4	2
37	021611	SEAL,PISTON,AIRZET,PK-32	1
38	0059800	AXLE,DS50-150	1
39	651562	SEAL,PISTON,AIRZET,PK-20	1
40	651444	CONN,STRAIGHT,MINI M5-4MM	1
41	650931	VALVE, SUPPLY FLOW CONTROL M5	1
42	245E140106010	HEAD,HOUSING,DS50-150	1
43	615724	WASH,PLAIN,M6	4
44	652327	BRG,PLAIN-18X20X10	1
45	615106	SCR,SET,CONE PT,M4X6	1

This document is the property of
Dienes Corporation
It may contain proprietary information
DO NOT USE FOR PURPOSES
OTHER THAN THOSE INTENDED

 US PROJECTION		DIENES CORPORATION <i>Spencer Massachusetts</i>	
HLDR,DS50-150,LH,DVTSCR(Z1-Z3)		Unless Otherwise Noted Dimensions Are In Inches	Drawn by: ARC Date: 04/22/2021
REFERENCE METRIC DATA		Tolerances Unless Noted: .XXX ±.005 .XX ±.010 FRACT. ±.015 ANGLES ±1/2° Finish Unless Noted: <input checked="" type="checkbox"/>	Checked by: AC Date: 09/25/2020 Scale: 1:3
O.D. I.D. THK. REF DWG:	DIM TOL	DO NOT SCALE DRAWING Sheet 2 of 2	Drawing Number DP3158-0001 Rev. A
		For Internal DIENES CORPORATION Use Only	